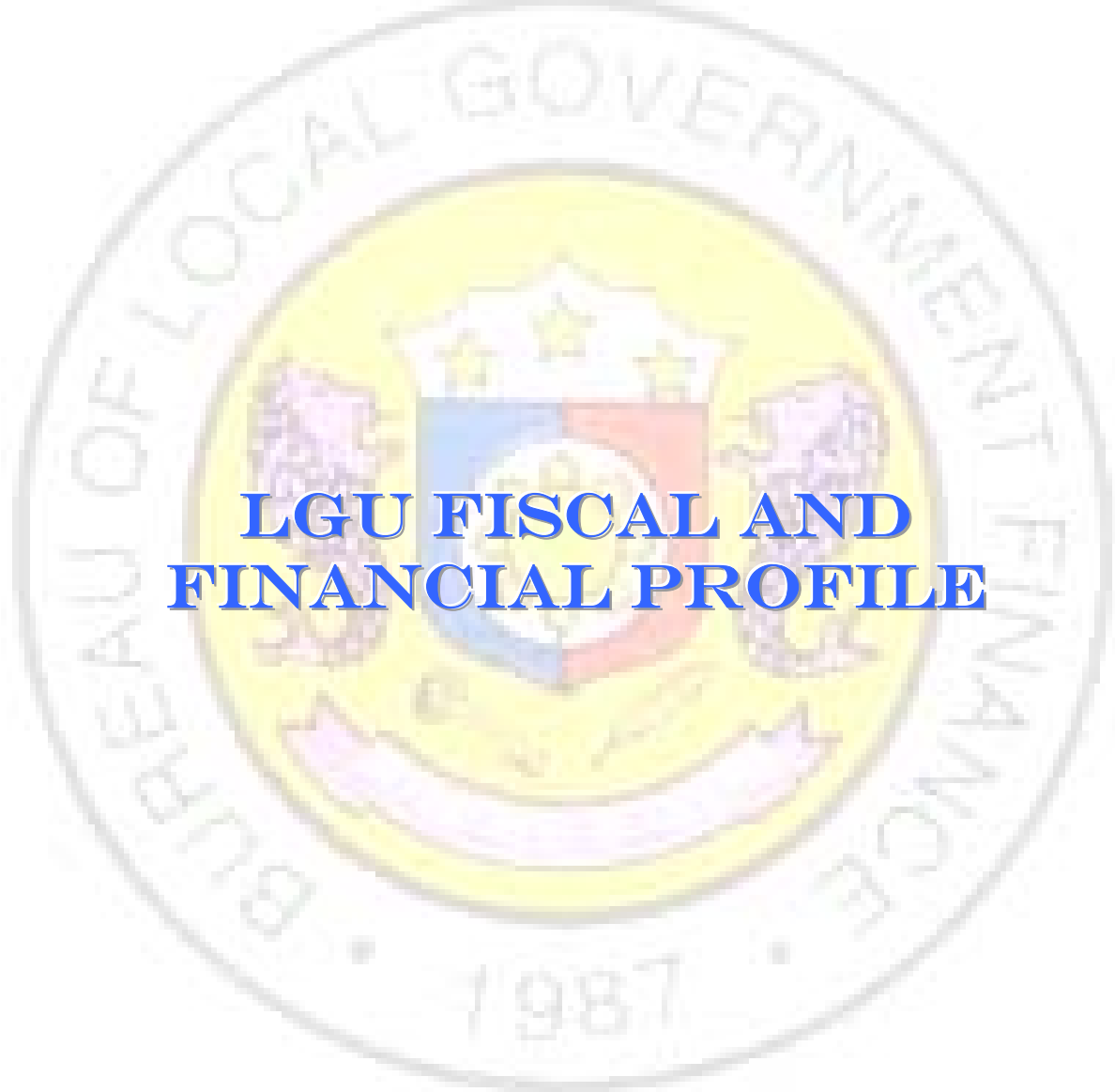


Department of Finance
BUREAU OF LOCAL GOVERNMENT FINANCE



**LGU FISCAL AND
FINANCIAL PROFILE**

STATEMENT OF INCOME AND EXPENDITURES
CY 2004 PUBLICATION

VOLUME II

The CY 2004 Statement of Income and Expenditure
is a maiden publication prepared by the
Bureau of Local Government Finance (BLGF)
of the Department of Finance (DOF).
For technical inquiries, please contact us at : (632) 5228771
Or check out our website www.blgf.gov.ph

TERMS OF USE OF BLGF PUBLICATION

The BLGF-DOF reserves its exclusive right to reproduce all its publications in whatever form. Any part of this publication should not be reproduced, recopied, lend or repackaged for other parties for any commercial purposes without written permission from the BLGF-DOF. Any part of this publication may only be reproduced for internal use of the recipient. Should any portion of the data in this publication are to be included in a report / article, the source of the data, the title of the publication and the BLGF-DOF as publisher should always be cited. Any information derived from the manipulation of data contained in the publication will no longer be the responsibility of BLGF – DOF.

DISCLAIMER

All financial data related to the Statement of Income and Expenditures were derived from the reports submitted by the LGUs and certified by their respective Treasurers

Published by the
Department of Finance
Bureau of Local Government Finance
8th floor, EDPC Bldg., Bangko Sentral ng Pilipinas
Complex, Roxas Blvd., Pasay City
Philippines

January 2007

The CY 2004 Statement of Income and Expenditure Publication is
available only in electronic format (CDRom: Excel/Word/PDF)
and can be downloaded through www.blgf.gov.ph

TABLE OF CONTENTS

(Volume II)

Table of Contents	1
Statement of Income and Expenditure by Region	2
All Provinces / Cities / Municipalities Combined	3-6
All Provinces Combined	7-10
All Cities Combined	11-14
All Municipalities Combined	15-18
Ratio of each Income Item to Total Income and each Expenditure to Total Expenditure	19-20
Statement of Income and Expenditures by Province	21-31
Statement of Income and Expenditure by City	32-47
Statement of Income and Expenditure by Municipality	48

STATEMENT OF INCOME AND EXPENDITURES
BY REGION

STATEMENT OF INCOME AND EXPENDITURES BY REGION
ALL PROVINCES/CITIES/MUNICIPALITIES COMBINED
CY 2004
(P 0.00)

PARTICULARS	NCR	I	II	III	IV-A
INCOME	34,435,848,337	8,663,244,439	6,880,256,326	9,068,659,553	11,857,655,084
LOCAL SOURCES	26,238,000,496	1,838,287,007	857,980,649	2,745,643,426	5,252,502,107
TAX REVENUE	23,060,167,083	971,088,682	452,133,294	1,513,965,310	4,209,930,176
Real Property Tax	10,225,851,338	438,803,467	192,370,559	927,505,762	2,996,860,134
Business Tax	11,745,619,956	461,007,026	222,276,874	473,161,204	959,794,134
Other Taxes	1,088,695,790	71,278,190	37,485,861	113,298,344	253,275,908
NON TAX REVENUE	3,177,833,413	867,198,325	405,847,355	1,231,678,116	1,042,571,932
Regulatory Fees	1,398,600,050	152,682,675	69,905,684	175,614,776	127,604,843
Service/User Charges	520,915,283	68,801,564	32,938,642	74,842,299	218,403,169
Receipts from Economic Enterprise	625,513,932	520,223,568	249,644,230	860,511,284	395,122,207
Toll Fees	1,525,600	1,769,912	45,000	-	4,100
Other Receipts	631,278,549	123,720,606	53,313,799	120,709,758	301,437,612
SHARES FROM NAT'L TAX COLLECTIONS	7,320,119,087	6,762,447,490	5,964,400,237	6,234,524,218	6,540,913,351
EXTRAORDINARY RECEIPTS/AIDS	47,382,976	58,672,542	32,988,441	63,624,409	53,127,856
INTER-LOCAL TRANSFERS	830,345,778	3,837,400	24,887,000	24,867,500	11,111,770
EXPENDITURES	30,097,781,931	8,303,076,670	6,348,349,854	8,850,152,147	11,180,972,674
General Public Services	10,529,529,100	3,173,396,651	2,935,582,108	2,735,494,606	3,577,965,283
Education, Culture & Sports/Manpower Devt.	4,676,433,918	292,845,740	118,303,276	452,285,007	1,657,662,874
Health, Nutrition, & Population Control	2,581,883,457	992,743,292	696,816,832	1,174,847,730	1,734,277,287
Labor and Employment	10,659,414	2,283,376	1,500	18,618,087	155,104
Housing & Community Development	1,608,588,079	268,586,842	130,751,118	95,926,107	207,913,393
Social Security/Social Services & Welfare	388,479,134	198,337,105	138,446,417	344,992,456	268,122,631
Economic Services	4,367,732,983	1,225,700,540	874,833,055	1,869,587,373	1,996,852,092
Debt Service	596,681,608	286,939,761	224,891,281	399,993,330	484,916,528
Other Purposes	5,337,794,239	1,862,243,364	1,228,724,268	1,758,407,451	1,253,107,480
EXCESS (DEFICIT) OF INCOME OVER EXPENDITURES	4,338,066,406	360,167,770	531,906,472	218,507,406	676,682,410
LOANS AND BORROWINGS	280,029,553	204,813,004	154,842,000	254,160,609	1,017,600,800

STATEMENT OF INCOME AND EXPENDITURES BY REGION
ALL PROVINCES/CITIES/MUNICIPALITIES COMBINED
CY 2004
(P 0.00)

PARTICULARS	IV-B	V	VI	VII	VIII
INCOME	4,485,654,322	4,655,470,395	8,869,965,115	8,605,145,677	4,006,873,606
LOCAL SOURCES	926,495,315	615,938,774	1,960,288,852	2,838,179,964	494,078,532
TAX REVENUE	649,640,889	399,146,219	1,378,517,229	1,913,933,777	277,502,819
Real Property Tax	331,612,602	213,624,044	849,571,498	891,016,755	133,346,616
Business Tax	288,528,883	154,786,482	414,890,477	892,843,000	126,116,721
Other Taxes	29,499,403	30,735,692	114,055,254	130,074,022	18,039,482
NON TAX REVENUE	276,854,427	216,792,555	581,771,623	924,246,187	216,575,713
Regulatory Fees	76,404,747	31,794,157	65,436,110	193,340,805	31,085,900
Service/User Charges	43,989,384	25,347,835	105,688,784	114,227,748	29,934,016
Receipts from Economic Enterprise	88,801,397	104,448,294	298,896,622	275,733,832	104,586,748
Toll Fees	21,418,121	59,945	9,890,278	37,407	645,933
Other Receipts	46,240,777	55,142,324	101,859,830	340,906,395	50,323,116
SHARES FROM NAT'L TAX COLLECTIONS	3,555,223,118	3,879,185,997	6,679,120,345	5,588,148,908	3,476,704,320
EXTRAORDINARY RECEIPTS/AIDS	1,223,462	160,345,624	230,555,919	8,860,031	33,091,656
INTER-LOCAL TRANSFERS	2,712,426	-	-	169,956,774	2,999,097
EXPENDITURES	4,123,823,077	4,546,617,773	7,908,618,922	8,002,691,193	3,695,492,735
General Public Services	1,521,248,697	1,557,740,433	2,729,822,959	2,978,393,790	1,270,624,025
Education, Culture & Sports/Manpower Devt.	196,985,083	148,729,266	448,880,877	400,552,063	79,462,563
Health, Nutrition, & Population Control	542,391,275	650,453,529	1,035,281,504	977,769,043	770,189,216
Labor and Employment	-	8,946,558	3,625,523	784,310	-
Housing & Community Development	84,437,488	9,445,346	105,699,351	131,594,517	3,653,720
Social Security/Social Services & Welfare	64,381,051	100,891,193	215,828,199	196,166,264	77,803,588
Economic Services	785,911,024	791,519,853	1,277,256,867	1,260,617,749	589,630,141
Debt Service	201,689,309	122,375,261	154,647,376	469,147,042	44,548,719
Other Purposes	726,779,150	1,156,516,334	1,937,576,265	1,587,666,416	859,580,763
EXCESS (DEFICIT) OF INCOME OVER EXPENDITURES	361,831,244	108,852,623	961,346,194	602,454,485	311,380,871
LOANS AND BORROWINGS	34,094,119	110,235,000	19,000,030	14,332,889	132,785,580

STATEMENT OF INCOME AND EXPENDITURES BY REGION
ALL PROVINCES/CITIES/MUNICIPALITIES COMBINED
CY 2004
(P 0.00)

PARTICULARS	IX	X	XI	XII	CAR
INCOME	5,075,208,017	5,257,751,427	5,946,272,358	5,496,682,438	2,459,855,690
LOCAL SOURCES	676,485,881	1,254,199,644	1,528,836,537	763,191,644	541,362,307
TAX REVENUE	301,059,033	811,721,668	1,022,853,354	476,685,094	315,091,379
Real Property Tax	109,873,105	414,030,903	466,662,849	265,700,468	146,094,698
Business Tax	169,287,254	356,251,255	476,523,076	179,677,222	143,041,459
Other Taxes	21,898,674	41,439,510	79,667,430	31,307,404	25,955,222
NON TAX REVENUE	375,426,848	442,477,976	505,983,182	286,506,550	226,270,927
Regulatory Fees	37,043,845	40,620,940	97,540,667	80,231,778	16,602,084
Service/User Charges	20,366,380	40,211,377	82,904,073	21,248,930	42,944,251
Receipts from Economic Enterprise	210,470,503	236,142,913	258,844,843	108,628,148	112,238,200
Toll Fees	323,581	-	4,876,887	66,750	-
Other Receipts	107,222,539	125,502,745	61,816,713	76,330,944	54,486,392
SHARES FROM NAT'L TAX COLLECTIONS	4,386,477,484	3,994,912,957	4,361,393,848	4,730,556,440	1,838,311,814
EXTRAORDINARY RECEIPTS/AIDS	4,364,693	3,109,434	8,851,439	2,934,354	1,061,028
INTER-LOCAL TRANSFERS	7,879,959	5,529,392	47,190,535	-	79,120,542
EXPENDITURES	4,169,938,289	5,118,411,050	5,118,683,783	4,819,234,691	2,015,080,070
General Public Services	1,734,815,904	1,678,175,684	2,183,733,044	1,943,191,025	684,035,483
Education, Culture & Sports/Manpower Devt.	51,052,419	215,664,858	233,993,299	160,167,730	69,480,038
Health, Nutrition, & Population Control	317,273,017	822,697,027	413,646,856	465,690,671	460,453,014
Labor and Employment	30,595	1,587,476	-	806,580	-
Housing & Community Development	47,607,256	106,830,091	39,563,062	24,910,394	-
Social Security/Social Services & Welfare	92,214,660	89,261,726	88,634,434	120,404,520	40,409,115
Economic Services	799,394,761	1,034,528,408	882,054,343	1,089,003,904	324,659,670
Debt Service	86,339,312	217,869,500	175,539,332	131,716,467	1,382,934
Other Purposes	1,041,210,366	951,796,282	1,101,519,414	883,343,401	434,659,815
EXCESS (DEFICIT) OF INCOME OVER EXPENDITURES	905,269,728	139,340,377	827,588,576	677,447,747	444,775,620
LOANS AND BORROWINGS	83,680,774	261,910,682	-	24,511,338	43,374,000

STATEMENT OF INCOME AND EXPENDITURES BY REGION
ALL PROVINCES/CITIES/MUNICIPALITIES COMBINED
CY 2004
(P 0.00)

PARTICULARS	CARAGA	TOTAL
INCOME	<u>3,086,907,581</u>	<u>128,851,450,367</u>
LOCAL SOURCES	496,528,452	49,027,999,587
TAX REVENUE	262,589,663	38,016,025,668
Real Property Tax	144,809,658	18,747,734,455
Business Tax	105,327,644	17,169,132,667
Other Taxes	12,452,361	2,099,158,545
NON TAX REVENUE	233,938,790	11,011,973,919
Regulatory Fees	23,880,099	2,618,389,161
Service/User Charges	75,822,619	1,518,586,352
Receipts from Economic Enterprise	95,133,875	4,544,940,596
Toll Fees	94,782	40,758,295
Other Receipts	39,007,416	2,289,299,515
SHARES FROM NAT'L TAX COLLECTIONS	2,585,230,929	77,897,670,542
EXTRAORDINARY RECEIPTS/AIDS	5,148,200	715,342,065
INTER-LOCAL TRANSFERS	-	1,210,438,172
EXPENDITURES	<u>2,909,246,523</u>	<u>117,208,171,380</u>
General Public Services	1,001,153,654	42,234,902,445
Education, Culture & Sports/Manpower Devt.	49,005,178	9,251,504,187
Health, Nutrition, & Population Control	402,517,684	14,038,931,432
Labor and Employment	2,672,357	50,170,879
Housing & Community Development	12,869,262	2,878,376,028
Social Security/Social Services & Welfare	55,374,175	2,479,746,666
Economic Services	508,947,722	19,678,230,487
Debt Service	116,836,600	3,715,514,360
Other Purposes	759,869,891	22,880,794,898
EXCESS (DEFICIT) OF INCOME OVER EXPENDITURES	177,661,058	11,643,278,987
LOANS AND BORROWINGS	38,895,366	2,674,265,744

STATEMENT OF INCOME AND EXPENDITURES BY REGION
ALL PROVINCES COMBINED
CY 2004
(P 0.00)

PARTICULARS	I	II	III	IV-A	IV-B
INCOME	2,578,433,218	2,366,698,000	4,461,077,608	5,854,869,582	2,026,475,790
LOCAL SOURCES	315,861,830	194,011,000	933,599,531	2,141,256,273	127,650,276
TAX REVENUE	173,523,839	114,595,000	611,637,101	1,602,063,682	67,267,633
Real Property Tax	150,383,544	70,645,000	482,324,958	1,325,843,918	54,570,042
Business Taxes	13,192,961	32,448,000	80,105,129	147,759,363	8,808,386
Other Taxes	9,947,334	11,502,000	49,207,014	128,460,401	3,889,205
NON TAX REVENUE	142,337,991	79,416,000	321,962,430	539,192,591	60,382,643
Regulatory Fees	3,836,461	1,777,000	87,336,649	7,824,935	1,499,156
Service/User Charges	3,829,478	757,000	3,703,151	134,570,502	17,907,421
Receipts from Economic Enterprise	76,825,708	64,308,000	122,060,359	120,838,945	14,977,112
Toll Fees	-	-	-	-	20,335,311
Other Receipts	57,846,344	12,574,000	108,862,270	275,958,209	5,663,643
SHARES FROM NAT'L TAX COLLECTIONS	2,262,399,713	2,056,725,000	3,452,401,360	3,483,935,700	1,898,761,840
EXTRAORDINARY RECEIPTS/AIDS	171,675	3,734,000	25,209,217	4,545,875	63,674
LOANS AND BORROWINGS	-	93,343,000	25,000,000	225,131,734	-
INTER-LOCAL TRANSFERS	-	18,885,000	24,867,500	-	-
EXPENDITURES	2,570,439,262	2,006,437,000	4,051,202,702	5,310,090,456	1,805,587,154
General Public Services	664,153,330	731,748,000	1,159,274,670	1,349,933,944	680,134,015
Education, Culture & Sports/Manpower Devt.	125,283,604	46,366,000	236,078,173	1,004,084,474	38,468,921
Health, Nutrition, & Population Control	579,168,106	331,875,000	801,900,517	1,306,060,846	394,715,478
Labor and Employment	2,283,376	-	16,801,880	-	-
Housing & Community Development	157,712,142	75,522,000	19,526,635	9,925,031	14,474,656
Social Security/Social Services & Welfare	18,213,052	22,958,000	86,991,646	155,203,532	18,286,278
Economic Services	334,769,764	337,188,000	507,262,416	678,900,083	301,739,657
Debt Service	107,180,241	130,776,000	198,861,575	97,981,358	153,070,274
Other Purposes	581,675,646	330,004,000	1,024,505,190	708,001,189	204,697,875
EXCESS (DEFICIT) OF INCOME OVER EXPENDITURES	7,993,956	360,261,000	409,874,907	544,779,127	220,888,636

STATEMENT OF INCOME AND EXPENDITURES BY REGION
ALL PROVINCES COMBINED
CY 2004
(P 0.00)

PARTICULARS	V	VI	VII	VIII	IX
INCOME	2,715,628,929	3,251,418,130	2,801,081,068	2,501,989,422	2,384,039,928
LOCAL SOURCES	184,519,702	412,355,940	449,916,039	144,266,902	222,900,907
TAX REVENUE	114,500,898	221,543,850	149,533,213	66,523,634	32,519,355
Real Property Tax	83,195,745	194,500,330	120,127,178	59,515,255	26,145,943
Business Taxes	23,078,957	16,370,180	15,455,918	4,143,322	4,513,261
Other Taxes	8,226,196	10,673,340	13,950,117	2,865,058	1,860,151
NON TAX REVENUE	70,018,804	190,812,090	300,382,827	77,743,268	190,381,552
Regulatory Fees	3,116,864	8,685,010	51,625,578	594,954	858,700
Service/User Charges	8,892,515	39,471,560	19,091,919	19,631,884	3,424,711
Receipts from Economic Enterprise	27,169,654	116,039,900	30,908,101	29,896,894	147,703,606
Toll Fees	-	5,866,650	-	-	-
Other Receipts	30,839,772	20,748,970	198,757,229	27,619,535	38,394,535
SHARES FROM NAT'L TAX COLLECTIONS	2,287,544,209	2,676,645,730	2,189,569,991	2,268,565,647	2,118,410,734
EXTRAORDINARY RECEIPTS/AIDS	153,350,018	162,416,460	2,685,822	21,131,293	164,265
LOANS AND BORROWINGS	90,215,000	-	-	68,025,580	42,564,022
INTER-LOCAL TRANSFERS	-	-	158,909,215	-	-
EXPENDITURES	2,554,450,159	2,914,334,940	2,831,685,958	2,230,418,327	2,079,888,231
General Public Services	711,143,962	754,499,970	862,573,859	665,049,997	746,288,934
Education, Culture & Sports/Manpower Devt.	81,853,254	123,801,060	59,733,817	27,845,469	20,427,359
Health, Nutrition, & Population Control Labor and Employment	503,823,432	570,198,200	558,448,361	676,472,870	151,917,565
Housing & Community Development	2,350,664	4,845,490	162,315	3,653,720	26,330,801
Social Security/Social Services & Welfare	32,550,969	26,255,130	29,706,691	21,113,822	29,747,504
Economic Services	465,344,863	588,137,760	499,326,588	329,592,962	546,481,255
Debt Service	57,022,695	48,941,990	-	3,249,603	18,281,049
Other Purposes	700,360,320	797,655,340	821,734,327	503,439,882	540,413,764
EXCESS (DEFICIT) OF INCOME OVER EXPENDITURES	161,178,770	337,083,190	(30,604,891)	271,571,095	304,151,697

STATEMENT OF INCOME AND EXPENDITURES BY REGION
ALL PROVINCES COMBINED
 CY 2004
 (P 0.00)

PARTICULARS	X	XI	XII	CAR	CARAGA
INCOME	2,016,377,758	1,813,821,609	2,977,901,863	1,739,345,599	1,658,954,213
LOCAL SOURCES	292,803,196	233,521,819	229,359,160	128,849,247	170,069,232
TAX REVENUE	111,068,042	82,525,476	124,714,247	41,181,847	80,794,832
Real Property Tax	99,945,982	72,638,556	104,366,950	33,422,663	66,127,696
Business Taxes	4,559,206	5,891,662	15,402,231	4,847,793	11,772,340
Other Taxes	6,562,855	3,995,258	4,945,066	2,911,392	2,894,796
NON TAX REVENUE	181,735,153	150,996,343	104,644,913	87,667,399	89,274,400
Regulatory Fees	1,129,993	1,764,499	41,176,066	1,266,701	3,441,782
Service/User Charges	8,775,200	11,512,277	1,861,843	8,611,176	42,160,750
Receipts from Economic Enterprise	79,455,850	116,023,598	33,077,004	59,194,839	31,446,916
Toll Fees	-	-	-	-	-
Other Receipts	92,374,110	21,695,970	28,529,999	18,594,683	12,224,952
SHARES FROM NAT'L TAX COLLECTIONS	1,640,238,390	1,533,176,255	2,747,542,599	1,487,895,492	1,488,847,462
EXTRAORDINARY RECEIPTS/AIDS	275,324	-	1,000,104	106,319	37,519
LOANS AND BORROWINGS	83,060,849	-	-	43,374,000	-
INTER-LOCAL TRANSFERS	-	47,123,535	-	79,120,542	-
EXPENDITURES	1,921,314,087	1,611,392,611	2,697,829,556	1,504,523,955	1,467,300,881
General Public Services	656,868,608	577,276,020	963,689,924	444,271,657	514,487,459
Education, Culture & Sports/Manpower Devt.	50,772,410	40,524,318	57,164,130	16,243,758	23,737,795
Health, Nutrition, & Population Control	523,796,806	213,284,460	303,625,878	407,846,788	259,727,675
Labor and Employment	-	-	-	-	-
Housing & Community Development	1,185,995	-	12,689,155	-	-
Social Security/Social Services & Welfare	13,769,083	22,204,016	60,666,852	20,701,376	17,283,788
Economic Services	318,859,238	261,214,729	682,776,913	236,464,516	184,490,948
Debt Service	86,772,315	80,078,865	65,637,826	1,382,934	32,804,816
Other Purposes	269,289,633	416,810,202	551,578,878	377,612,925	434,768,400
EXCESS (DEFICIT) OF INCOME OVER EXPENDITURES	95,063,671	202,428,998	280,072,306	234,821,645	191,653,332

STATEMENT OF INCOME AND EXPENDITURES BY REGION
ALL PROVINCES COMBINED
CY 2004
(P 0.00)

PARTICULARS	TOTAL
INCOME	<u>41,148,112,718</u>
LOCAL SOURCES	6,180,941,053
TAX REVENUE	3,593,992,649
Real Property Tax	2,943,753,760
Business Taxes	388,348,708
Other Taxes	261,890,181
NON TAX REVENUE	2,586,948,404
Regulatory Fees	215,934,349
Service/User Charges	324,201,388
Receipts from Economic Enterprise	1,069,926,486
Toll Fees	26,201,961
Other Receipts	950,684,220
SHARES FROM NAT'L TAX COLLECTIONS	33,592,660,123
EXTRAORDINARY RECEIPTS/AIDS	374,891,565
LOANS AND BORROWINGS	670,714,186
INTER-LOCAL TRANSFERS	328,905,791
 EXPENDITURES	 <u>37,556,895,279</u>
General Public Services	11,481,394,348
Education, Culture & Sports/Manpower Dev't.	1,952,384,543
Health, Nutrition, & Population Control	7,582,861,984
Labor and Employment	19,085,256
Housing & Community Development	328,378,604
Social Security/Social Services & Welfare	575,651,740
Economic Services	6,272,549,693
Debt Service	1,082,041,540
Other Purposes	8,262,547,572
EXCESS (DEFICIT) OF INCOME OVER EXPENDITURES	3,591,217,439

STATEMENT OF INCOME AND EXPENDITURES BY REGION
ALL CITIES COMBINED
CY 2004
(P 0.00)

PARTICULARS	NCR	I	II	III	IV-A
INCOME	33,015,659,748	1,910,565,057	1,051,284,229	4,586,042,554	6,348,191,144
LOCAL SOURCES	24,995,788,967	640,510,936	224,398,176	1,790,619,895	3,008,440,912
TAX REVENUE	22,031,343,807	340,049,760	136,109,668	891,337,209	2,549,477,136
Real Property Tax	9,738,475,792	115,850,708	42,441,942	439,193,803	1,644,331,349
Business Taxes	11,308,923,703	198,694,946	83,439,542	388,933,075	784,085,076
Other Taxes	983,944,312	25,504,106	10,228,184	63,210,330	121,060,711
NON TAX REVENUE	2,964,445,160	300,461,176	88,288,508	899,282,687	458,963,776
Regulatory Fees	1,330,445,155	50,117,286	18,224,459	85,326,127	109,743,412
Service/User Charges	498,571,923	22,990,172	11,050,973	69,925,147	80,067,899
Receipts from Economic Enterprise	536,811,320	215,372,255	49,297,556	732,449,924	247,543,266
Toll Fees	-	-	-	-	-
Other Receipts	598,616,761	11,981,464	9,715,521	11,581,488	21,609,199
SHARES FROM NAT'L TAX COLLECTIONS	6,862,744,463	1,236,246,202	826,601,263	2,529,426,858	2,570,081,166
EXTRAORDINARY RECEIPTS/AIDS	46,750,988	4,499,928	284,790	38,410,192	15,921,089
LOANS AND BORROWINGS	280,029,553	29,307,990	-	227,585,609	745,548,405
INTER-LOCAL TRANSFERS	830,345,778	-	-	-	8,199,571
EXPENDITURES	28,500,531,907	1,768,887,958	1,019,312,248	4,547,663,445	5,281,735,327
General Public Services	10,039,391,647	624,982,231	532,134,299	1,454,633,936	1,927,658,858
Education, Culture & Sports/Manpower Devt.	4,435,554,682	95,392,460	26,215,731	211,989,833	643,002,867
Health, Nutrition, & Population Control	2,454,977,013	97,657,635	74,179,514	355,563,213	370,596,622
Labor and Employment	10,603,912	-	-	1,816,207	-
Housing & Community Development	1,608,566,299	32,016,918	2,372,321	76,399,473	193,696,710
Social Security/Social Services & Welfare	361,573,828	50,420,450	15,870,612	249,522,811	100,888,063
Economic Services	4,161,957,378	368,034,680	110,182,556	1,321,234,957	1,212,929,629
Debt Service	519,758,591	83,899,938	4,268,000	197,865,755	379,972,089
Other Purposes	4,908,148,558	416,483,649	254,089,214	678,637,261	452,990,490
EXCESS (DEFICIT) OF INCOME OVER EXPENDITURES	4,515,127,841	141,677,099	31,971,981	38,379,109	1,066,455,817

STATEMENT OF INCOME AND EXPENDITURES BY REGION
ALL CITIES COMBINED
CY 2004
(P 0.00)

PARTICULARS	IV-B	V	VI	VII	VIII
INCOME	1,099,140,403	1,696,070,396	5,139,412,920	4,896,641,499	1,515,666,375
LOCAL SOURCES	134,858,775	399,952,280	1,495,963,070	2,214,529,385	333,115,364
TAX REVENUE	101,205,550	271,330,716	1,134,700,950	1,650,380,554	201,900,230
Real Property Tax	44,796,416	124,480,861	645,108,650	681,881,267	69,036,791
Business Taxes	45,571,047	125,955,468	391,893,620	857,289,172	118,564,522
Other Taxes	10,838,087	20,894,388	97,698,680	111,210,115	14,298,917
NON TAX REVENUE	33,653,226	128,621,563	361,262,120	564,148,831	131,215,134
Regulatory Fees	8,237,356	25,605,541	50,802,190	131,117,107	29,182,177
Service/User Charges	6,057,778	14,945,330	62,123,160	91,109,389	9,450,718
Receipts from Economic Enterprise	14,394,374	64,986,677	168,541,310	204,951,921	69,782,338
Toll Fees	-	-	590,780	16,277	645,933
Other Receipts	4,963,718	23,084,015	79,204,680	136,954,136	22,153,969
SHARES FROM NAT'L TAX COLLECTIONS	929,916,808	1,269,498,160	3,567,883,820	2,665,509,016	1,102,903,606
EXTRAORDINARY RECEIPTS/AIDS	270,701	6,619,956	56,566,000	368,739	11,888,308
LOANS AND BORROWINGS	34,094,119	20,000,000	19,000,030	14,332,889	64,760,000
INTER-LOCAL TRANSFERS	-	-	-	1,901,470	2,999,097
EXPENDITURES	1,064,316,927	1,667,539,077	4,532,279,940	4,409,287,255	1,351,651,339
General Public Services	297,158,250	656,265,065	1,750,399,150	1,781,239,962	546,201,146
Education, Culture & Sports/Manpower Devt.	31,984,599	63,438,268	320,770,910	307,236,715	49,836,319
Health, Nutrition, & Population Control	50,288,000	111,322,688	414,989,230	333,143,381	81,960,071
Labor and Employment	-	7,295,058	688,270	-	-
Housing & Community Development	-	6,115,178	99,079,970	127,223,932	-
Social Security/Social Services & Welfare	8,615,381	54,773,916	174,035,190	135,008,532	52,118,297
Economic Services	288,056,731	292,934,533	636,542,670	649,997,762	246,545,029
Debt Service	9,976,648	65,352,566	103,297,500	456,631,232	41,299,116
Other Purposes	378,237,318	410,041,805	1,032,477,050	618,805,739	333,691,360
EXCESS (DEFICIT) OF INCOME OVER EXPENDITURES	34,823,476	28,531,319	607,132,980	487,354,244	164,015,036

STATEMENT OF INCOME AND EXPENDITURES BY REGION
ALL CITIES COMBINED
CY 2004
(P 0.00)

PARTICULARS	IX	X	XI	XII	CAR	CARAGA
INCOME	2,086,368,430	3,503,284,351	3,386,620,922	1,937,085,937	763,884,091	1,211,645,632
LOCAL SOURCES	419,876,333	961,396,449	1,138,160,420	470,117,258	412,513,060	312,374,601
TAX REVENUE	250,588,361	700,653,626	840,112,583	314,253,807	273,909,532	175,556,531
Real Property Tax	76,738,628	314,084,921	333,201,419	143,504,689	112,672,035	76,316,014
Business Taxes	156,192,361	351,692,050	434,336,549	148,166,380	138,193,666	90,775,094
Other Taxes	17,657,372	34,876,655	72,574,615	22,582,738	23,043,830	8,465,423
NON TAX REVENUE	169,287,972	260,742,823	298,047,837	155,863,451	138,603,528	136,818,069
Regulatory Fees	31,388,815	39,490,947	69,887,376	32,526,059	15,335,383	18,197,238
Service/User Charges	14,888,912	31,436,177	66,223,251	15,674,788	34,333,075	32,075,416
Enterprise Receipts from Economic	57,843,429	156,687,063	123,978,633	60,934,395	53,043,361	61,455,915
Toll Fees	-	-	3,379,252	-	-	94,782
Other Receipts	65,166,816	33,128,636	34,579,326	46,728,209	35,891,709	24,994,718
SHARES FROM NAT'L TAX COLLECTIONS	1,621,098,509	2,354,674,567	2,247,819,915	1,452,832,163	350,416,322	855,264,985
EXTRAORDINARY RECEIPTS/AIDS	1,251,667	2,834,110	640,586	1,600,016	954,709	5,110,680
LOANS AND BORROWINGS	41,116,752	178,849,833	-	12,536,500	-	38,895,366
INTER-LOCAL TRANSFERS	3,025,170	5,529,392	-	-	-	-
EXPENDITURES	1,421,933,264	3,197,096,963	2,789,007,848	1,594,908,423	510,556,115	1,211,867,456
General Public Services	607,141,046	1,021,307,076	1,229,077,737	719,688,838	239,763,826	363,255,100
Education, Culture & Sports/Manpower Devt.	26,577,279	164,892,448	162,958,615	92,774,839	53,236,280	23,967,774
Health, Nutrition, & Population Control	111,882,926	298,900,221	138,238,830	113,533,859	52,606,225	109,118,292
Labor and Employment	30,595	1,587,476	-	806,580	-	2,672,357
Housing & Community Development	21,211,455	105,644,096	37,573,734	7,345,990	-	12,869,262
Social Security/Social Services & Welfare	40,327,466	75,492,643	42,793,350	45,890,064	19,707,739	29,456,120
Economic Services	197,949,642	715,669,170	516,324,202	342,629,113	88,195,154	296,495,534
Debt Service	59,279,241	131,097,185	92,924,707	61,505,740	-	84,031,784
Other Purposes	357,533,613	682,506,649	569,116,673	210,733,401	57,046,890	290,001,233
EXCESS (DEFICIT) OF INCOME OVER EXPENDITURES	664,435,167	306,187,388	597,613,074	342,177,514	253,327,976	(221,824)

**STATEMENT OF INCOME AND EXPENDITURES BY
REGION**
ALL CITIES COMBINED
CY 2004
(P 0.00)

PARTICULARS	TOTAL
INCOME	<u>74,147,563,687</u>
LOCAL SOURCES	38,952,615,881
TAX REVENUE	31,862,910,019
Real Property Tax	14,602,115,285
Business Taxes	15,622,706,270
Other Taxes	1,638,088,464
NON TAX REVENUE	7,089,705,862
Regulatory Fees	2,045,626,628
Service/User Charges	1,060,924,108
Receipts from Economic Enterprise	2,818,073,737
Toll Fees	4,727,024
Other Receipts	1,160,354,365
SHARES FROM NAT'L TAX COLLECTIONS	32,442,917,823
EXTRAORDINARY RECEIPTS/AIDS	193,972,460
LOANS AND BORROWINGS	1,706,057,047
INTER-LOCAL TRANSFERS	852,000,478
EXPENDITURES	<u>64,868,575,491</u>
General Public Services	23,790,298,165
Education, Culture & Sports/Manpower Devt.	6,709,829,618
Health, Nutrition, & Population Control	5,168,957,718
Labor and Employment	25,500,453
Housing & Community Development	2,330,115,339
Social Security/Social Services & Welfare	1,456,494,463
Economic Services	11,445,678,739
Debt Service	2,291,160,093
Other Purposes	11,650,540,903
EXCESS (DEFICIT) OF INCOME OVER EXPENDITURES	9,278,988,196

STATEMENT OF INCOME AND EXPENDITURES BY REGION
ALL MUNICIPALITIES COMBINED
 CY 2004
 (P 0.00)

PARTICULARS	NCR	I	II	III	IV-A
INCOME	<u>1,700,218,142</u>	<u>4,379,059,168</u>	<u>3,617,116,097</u>	<u>6,870,165,053</u>	<u>9,778,266,177</u>
LOCAL SOURCES	1,242,211,529	881,914,240	439,571,473	1,863,515,772	3,907,204,042
TAX REVENUE	1,028,823,276	457,515,083	201,428,626	1,249,029,416	2,808,539,353
Real Property Tax	487,375,546	172,569,215	79,283,617	664,745,015	1,420,108,476
Business Taxes	436,696,252	249,119,118	106,389,332	527,019,718	1,309,639,479
Other Taxes	104,751,478	35,826,750	15,755,677	57,264,683	78,791,398
NON TAX REVENUE	213,388,253	424,399,157	238,142,847	614,486,356	1,098,664,690
Regulatory Fees	68,154,894	98,728,928	49,904,225	166,843,843	313,448,842
Service/User Charges	22,343,359	41,981,915	21,130,669	76,351,530	151,773,998
Receipts from Economic Enterprise	88,702,611	228,025,605	136,038,674	288,425,486	521,616,428
Toll Fees	1,525,600	1,769,912	45,000	6,043,061	1,698,107
Other Receipts	32,661,788	53,892,798	31,024,278	76,822,436	110,127,314
SHARES FROM NAT'L TAX COLLECTIONS	457,374,624	3,263,801,575	3,081,073,974	4,785,780,009	5,686,425,180
EXTRAORDINARY RECEIPTS/AIDS	631,988	54,000,939	28,969,651	91,854,673	38,281,533
LOANS AND BORROWINGS	-	175,505,014	61,499,000	116,891,623	131,635,520
INTER-LOCAL TRANSFERS	-	3,837,400	6,002,000	12,122,975	14,719,901
EXPENDITURES	<u>1,597,250,024</u>	<u>3,963,749,449</u>	<u>3,322,600,606</u>	<u>6,450,169,832</u>	<u>8,986,464,088</u>
General Public Services	490,137,453	1,884,261,090	1,671,699,808	2,893,995,804	4,397,064,357
Education, Culture & Sports/Manpower Devt.	240,879,235	72,169,676	45,721,545	344,031,140	729,795,295
Health, Nutrition, & Population Control	126,906,444	315,917,551	290,762,318	611,104,582	681,837,444
Labor and Employment	55,502	-	1,500	33,310,772	2,619,911
Housing & Community Development	21,780	78,857,782	52,856,796	101,080,790	225,777,093
Social Security/Social Services & Welfare	26,905,306	129,703,603	99,617,805	279,395,522	258,817,984
Economic Services	205,775,605	522,896,096	427,462,499	863,655,507	1,255,672,688
Debt Service	76,923,017	95,859,582	89,847,281	94,895,490	201,955,786
Other Purposes	429,645,681	864,084,069	644,631,054	1,228,700,227	1,232,923,531
EXCESS (DEFICIT) OF INCOME OVER EXPENDITURES	102,968,118	415,309,719	294,515,491	419,995,221	791,802,088

STATEMENT OF INCOME AND EXPENDITURES BY REGION
ALL MUNICIPALITIES COMBINED
 CY 2004
 (P 0.00)

PARTICULARS	IV-B	V	VI	VII	VIII
INCOME	<u>2,972,679,700</u>	<u>3,951,780,429</u>	<u>4,380,778,403</u>	<u>4,205,404,004</u>	<u>3,908,931,462</u>
LOCAL SOURCES	315,707,765	421,414,773	788,647,196	668,477,437	367,347,420
TAX REVENUE	142,203,026	210,042,013	488,521,564	305,941,578	166,435,261
Real Property Tax	65,314,051	100,331,018	343,717,607	145,413,522	72,761,381
Business Taxes	61,118,175	84,520,775	118,869,783	138,632,873	74,037,869
Other Taxes	15,770,800	25,190,220	25,934,174	21,895,182	19,636,012
NON TAX REVENUE	173,504,739	211,372,759	300,125,632	362,535,859	200,912,159
Regulatory Fees	33,128,550	47,194,293	69,570,545	61,384,027	42,787,094
Service/User Charges	18,543,749	27,466,848	25,349,539	28,366,899	27,534,679
Receipts from Economic Enterprise	92,959,177	105,827,467	165,534,994	214,902,182	95,258,838
Toll Fees	2,819,619	4,191,405	604,310	8,382,464	2,265,350
Other Receipts	26,053,644	26,692,746	39,066,245	49,500,288	33,066,198
SHARES FROM NAT'L TAX COLLECTIONS	2,570,468,481	3,440,571,128	3,537,506,987	3,359,172,164	3,493,874,680
EXTRAORDINARY RECEIPTS/AIDS	24,175,050	20,532,430	22,233,580	38,064,357	27,058,132
LOANS AND BORROWINGS	43,487,000	68,918,685	22,531,680	123,872,152	15,729,211
INTER-LOCAL TRANSFERS	18,841,404	343,414	9,858,960	15,817,894	4,922,019
EXPENDITURES	<u>2,678,733,036</u>	<u>3,664,195,995</u>	<u>3,807,113,802</u>	<u>3,678,307,827</u>	<u>3,659,888,308</u>
General Public Services	1,404,922,362	1,853,007,239	1,983,501,251	1,806,978,232	2,004,353,967
Education, Culture & Sports/Manpower Devt.	30,329,176	53,177,584	108,978,240	80,715,760	31,156,108
Health, Nutrition, & Population Control	219,586,785	387,995,559	369,310,958	377,478,941	316,051,415
Labor and Employment	3,454,431	4,828,700	1,898,210	5,220,900	1,619,738
Housing & Community Development	35,987,932	15,850,069	24,118,832	39,669,504	6,941,081
Social Security/Social Services & Welfare	77,560,634	100,748,779	150,846,422	90,909,589	125,878,266
Economic Services	341,921,438	483,540,937	495,703,914	466,137,207	386,824,393
Debt Service	35,677,034	31,814,892	46,906,920	59,084,292	28,885,770
Other Purposes	529,293,244	733,232,235	625,849,055	752,113,403	758,177,569
EXCESS (DEFICIT) OF INCOME OVER EXPENDITURES	293,946,663	287,584,435	573,664,601	527,096,177	249,043,154

STATEMENT OF INCOME AND EXPENDITURES BY REGION
ALL MUNICIPALITIES COMBINED
 CY 2004
 (P 0.00)

PARTICULARS	IX	X	XI	XII	CAR
INCOME	3,356,809,851	2,823,356,535	2,431,596,350	4,584,432,136	2,221,437,113
LOCAL SOURCES	241,509,129	411,118,157	342,981,138	367,051,658	189,750,784
TAX REVENUE	92,159,372	216,005,682	183,958,812	221,686,308	105,511,362
Real Property Tax	36,920,609	120,071,395	87,236,255	113,551,777	41,500,653
Business Taxes	44,054,657	84,094,427	81,216,091	88,310,188	51,196,957
Other Taxes	11,184,105	11,839,860	15,506,466	19,824,343	12,813,752
NON TAX REVENUE	149,349,758	195,112,475	159,022,326	145,365,350	84,239,422
Regulatory Fees	24,135,702	47,786,550	32,217,265	27,460,399	22,692,151
Service/User Charges	14,193,811	18,261,776	18,624,704	14,605,966	12,711,277
Receipts from Economic Enterprise	100,495,570	108,201,302	88,772,967	90,262,666	30,883,886
Toll Fees	116,434	1,942,850	4,092,430	1,732,902	-
Other Receipts	10,408,242	18,919,997	15,314,960	11,303,418	17,952,108
SHARES FROM NAT'L TAX COLLECTIONS	3,058,084,726	2,400,768,791	1,977,104,462	4,114,163,945	2,003,951,065
EXTRAORDINARY RECEIPTS/AIDS	18,401,501	10,644,687	15,669,302	29,453,828	13,015,416
LOANS AND BORROWINGS	35,259,430	-	95,703,078	71,102,165	14,550,000
INTER-LOCAL TRANSFERS	3,555,064	824,900	138,370	2,660,540	169,847
EXPENDITURES	3,105,534,716	2,666,226,469	2,171,842,060	4,367,257,412	1,976,764,308
General Public Services	1,720,246,176	1,331,539,416	1,065,477,772	2,318,765,985	1,062,598,445
Education, Culture & Sports/Manpower Devt.	18,769,713	59,344,668	48,452,243	56,697,363	20,285,700
Health, Nutrition, & Population Control	187,121,936	209,120,872	182,771,728	203,394,992	214,003,081
Labor and Employment	3,700,575	-	746,684	2,305,951	-
Housing & Community Development	11,866,514	13,681,059	14,810,373	16,852,338	590,416
Social Security/Social Services & Welfare	73,884,158	80,313,842	66,824,885	112,216,842	69,969,980
Economic Services	389,509,105	370,570,474	324,574,985	603,792,579	185,488,429
Debt Service	75,479,822	26,752,847	42,171,372	65,696,129	13,099,285
Other Purposes	624,956,716	574,903,291	426,012,019	987,535,234	410,728,973
EXCESS (DEFICIT) OF INCOME OVER EXPENDITURES	251,275,135	157,130,067	259,754,290	217,174,724	244,672,805

STATEMENT OF INCOME AND EXPENDITURES BY REGION
ALL MUNICIPALITIES COMBINED
 CY 2004
 (P 0.00)

PARTICULARS	CARAGA	TOTAL
INCOME	<u>2,422,122,406</u>	<u>63,604,153,027</u>
LOCAL SOURCES	267,975,172	12,716,397,686
TAX REVENUE	132,460,366	8,010,261,097
Real Property Tax	72,332,580	4,023,232,718
Business Taxes	45,618,516	3,500,534,211
Other Taxes	14,509,270	486,494,168
NON TAX REVENUE	135,514,806	4,706,136,590
Regulatory Fees	29,708,160	1,135,145,470
Service/User Charges	15,942,124	535,182,842
Receipts from Economic Enterprise	75,745,735	2,431,653,588
Toll Fees	2,062,324	39,291,767
Other Receipts	12,056,463	564,862,922
SHARES FROM NAT'L TAX COLLECTIONS	2,136,905,308	49,367,027,099
EXTRAORDINARY RECEIPTS/AIDS	11,968,271	444,955,339
LOANS AND BORROWINGS	4,856,800	981,541,359
INTER-LOCAL TRANSFERS	416,855	94,231,544
 EXPENDITURES	 <u>2,296,863,057</u>	 <u>58,392,960,990</u>
General Public Services	1,194,845,876	29,083,395,234
Education, Culture & Sports/Manpower Devt.	24,345,493	1,964,848,940
Health, Nutrition, & Population Control	191,985,256	4,885,349,862
Labor and Employment	-	59,762,873
Housing & Community Development	-	638,962,359
Social Security/Social Services & Welfare	64,189,060	1,807,782,676
Economic Services	297,314,378	7,620,840,235
Debt Service	24,287,720	1,009,337,237
Other Purposes	499,895,274	11,322,681,575
EXCESS (DEFICIT) OF INCOME OVER EXPENDITURES	125,259,349	5,211,192,037

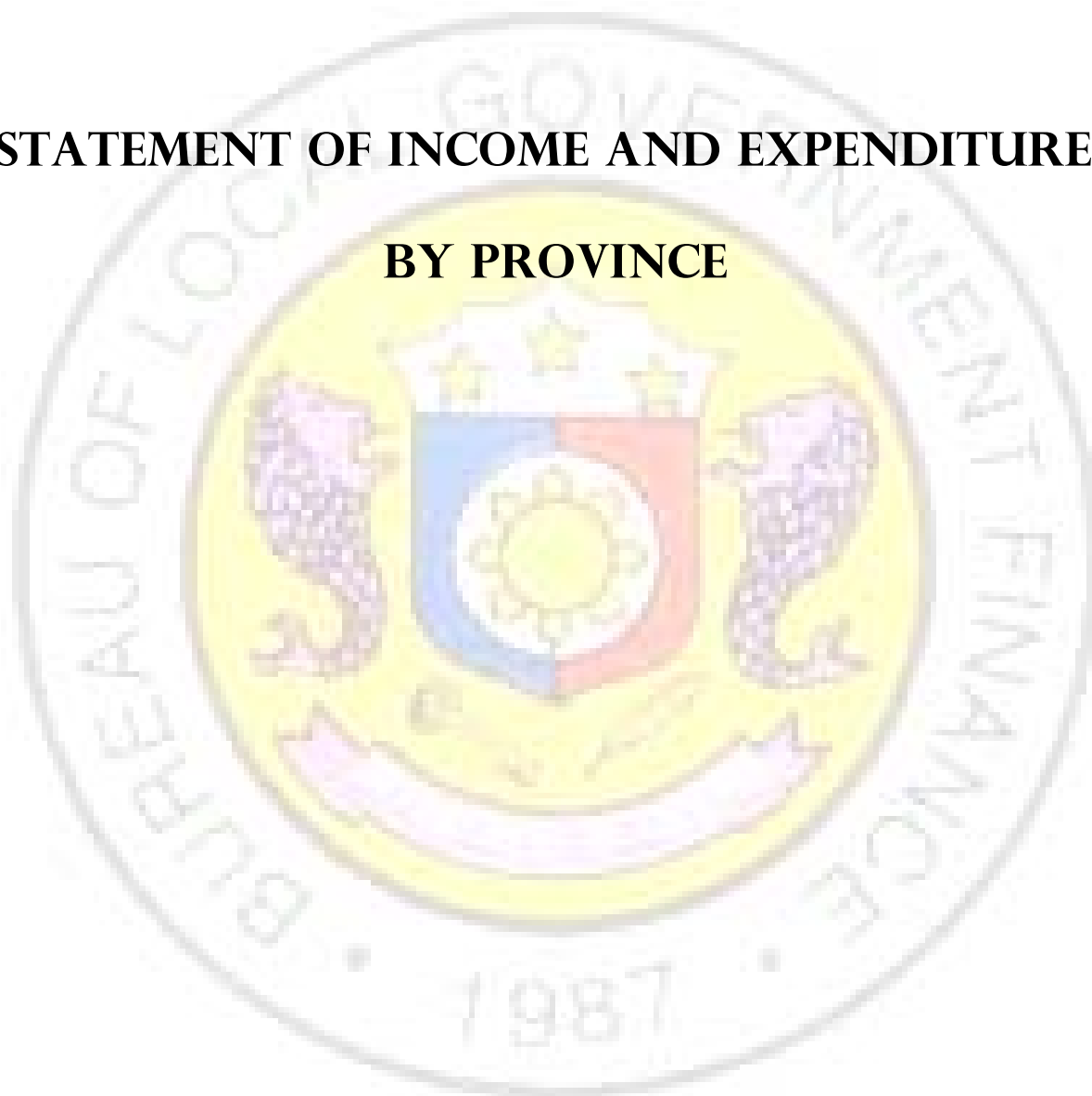
**RATIO OF EACH INCOME ITEM TO TOTAL INCOME
AND EACH EXPENDITURE ITEM TO TOTAL EXPENDITURE
BY REGION
CY 2004**

PARTICULARS	NCR	I	II	III	III	IV-B	V	VI	VII
INCOME	100.0%	100.0%	100.0%	100.0%	100.0%	100.0%	100.0%	100.0%	100.0%
LOCAL SOURCES	75.6%	20.7%	12.2%	29.5%	40.8%	20.5%	12.9%	22.1%	32.9%
TAX REVENUE	66.4%	11.0%	6.4%	16.2%	32.7%	14.4%	8.4%	15.5%	22.2%
Real Property Tax	29.5%	4.9%	2.7%	9.9%	23.3%	7.3%	4.5%	9.6%	10.3%
Business Tax	33.8%	5.2%	3.2%	5.1%	7.5%	6.4%	3.2%	4.7%	10.4%
Other Taxes	3.1%	0.8%	0.5%	1.2%	2.0%	0.7%	0.6%	1.3%	1.5%
NON TAX REVENUE	9.2%	9.8%	5.8%	13.2%	8.1%	6.1%	4.5%	6.5%	10.7%
Regulatory Fees	4.0%	1.7%	1.0%	1.9%	1.0%	1.7%	0.7%	0.7%	2.2%
Service/User Charges	1.5%	0.8%	0.5%	0.8%	1.7%	1.0%	0.5%	1.2%	1.3%
Receipts from Economic Enterprise	1.8%	5.9%	3.5%	9.2%	3.1%	2.0%	2.2%	3.4%	3.2%
Toll Fees	0.0%	0.0%	0.0%	0.0%	0.0%	0.5%	0.0%	0.1%	0.0%
Other Receipts	1.8%	1.4%	0.8%	1.3%	2.3%	1.0%	1.2%	1.1%	4.0%
SHARES FROM NAT'L TAX COLLECTIONS	21.1%	76.3%	84.8%	66.9%	50.8%	78.7%	81.4%	75.1%	64.8%
EXTRAORDINARY RECEIPTS/AIDS	0.1%	0.7%	0.5%	0.7%	0.4%	0.0%	3.4%	2.6%	0.1%
LOANS AND BORROWINGS	0.8%	2.3%	2.2%	2.7%	7.9%	0.8%	2.3%	0.2%	0.2%
INTER-LOCAL TRANSFERS	2.4%	0.0%	0.4%	0.3%	0.1%	0.1%	0.0%	0.0%	2.0%
EXPENDITURES	100.0%	100.0%	100.0%	100.0%	100.0%	100.0%	100.0%	100.0%	100.0%
General Public Services	35.0%	38.2%	46.2%	30.9%	32.0%	36.9%	34.3%	34.5%	37.2%
Education, Culture & Sports /Manpower Devt.	15.5%	3.5%	1.9%	5.1%	14.8%	4.8%	3.3%	5.7%	5.0%
Health, Nutrition, & Population Control	8.6%	12.0%	11.0%	13.3%	15.5%	13.2%	14.3%	13.1%	12.2%
Labor and Employment	0.0%	0.0%	0.0%	0.2%	0.0%	0.0%	0.2%	0.0%	0.0%
Housing & Community Development	5.3%	3.2%	2.1%	1.1%	1.9%	2.0%	0.2%	1.3%	1.6%
Social Security/Social Services & Welfare	1.3%	2.4%	2.2%	3.9%	2.4%	1.6%	2.2%	2.7%	2.5%
Economic Services	14.5%	14.8%	13.8%	21.1%	17.9%	19.1%	17.4%	16.2%	15.8%
Debt Service	2.0%	3.5%	3.5%	4.5%	4.3%	4.9%	2.7%	2.0%	5.9%
Other Purposes	17.7%	22.4%	19.4%	19.9%	11.2%	17.6%	25.4%	24.5%	19.8%

**RATIO OF EACH INCOME ITEM TO TOTAL INCOME
AND EACH EXPENDITURE ITEM TO TOTAL EXPENDITURE
BY REGION
CY 2004**

PARTICULARS	VIII	IX	X	XI	XII	CAR	CARAGA	TOTAL
INCOME	100.0%	100.0%	100.0%	100.0%	100.0%	100.0%	100.0%	100.0%
LOCAL SOURCES	11.9%	13.1%	22.7%	25.7%	13.8%	21.6%	15.9%	37.3%
TAX REVENUE	6.7%	5.8%	14.7%	17.2%	8.6%	12.6%	8.4%	28.9%
Real Property Tax	3.2%	2.1%	7.5%	7.8%	4.8%	5.8%	4.6%	14.3%
Business Tax	3.0%	3.3%	6.5%	8.0%	3.3%	5.7%	3.4%	13.1%
Other Taxes	0.4%	0.4%	0.8%	1.3%	0.6%	1.0%	0.4%	1.6%
NON TAX REVENUE	5.2%	7.3%	8.0%	8.5%	5.2%	9.0%	7.5%	8.4%
Regulatory Fees	0.8%	0.7%	0.7%	1.6%	1.5%	0.7%	0.8%	2.0%
Service/User Charges	0.7%	0.4%	0.7%	1.4%	0.4%	1.7%	2.4%	1.2%
Receipts from Economic Enterprise	2.5%	4.1%	4.3%	4.4%	2.0%	4.5%	3.0%	3.5%
Toll Fees	0.0%	0.0%	0.0%	0.1%	0.0%	0.0%	0.0%	0.0%
Other Receipts	1.2%	2.1%	2.3%	1.0%	1.4%	2.2%	1.2%	1.7%
SHARES FROM NAT'L TAX COLLECTIONS	84.0%	85.0%	72.4%	73.3%	85.7%	73.4%	82.7%	59.2%
EXTRAORDINARY RECEIPTS/AIDS	0.8%	0.1%	0.1%	0.1%	0.1%	0.0%	0.2%	0.5%
LOANS AND BORROWINGS	3.2%	1.6%	4.7%	0.0%	0.4%	1.7%	1.2%	2.0%
INTER-LOCAL TRANSFERS	0.1%	0.2%	0.1%	0.8%	0.0%	3.2%	0.0%	0.9%
EXPENDITURES	100.0%	100.0%	100.0%	100.0%	100.0%	100.0%	100.0%	100.0%
General Public Services	34.4%	41.6%	32.8%	42.7%	40.3%	33.9%	34.4%	36.0%
Education, Culture & Sports/Manpower Devt.	2.2%	1.2%	4.2%	4.6%	3.3%	3.4%	1.7%	7.9%
Health, Nutrition, & Population Control	20.8%	7.6%	16.1%	8.1%	9.7%	22.9%	13.8%	12.0%
Labor and Employment	0.0%	0.0%	0.0%	0.0%	0.0%	0.0%	0.1%	0.0%
Housing & Community Development	0.1%	1.1%	2.1%	0.8%	0.5%	0.0%	0.4%	2.5%
Social Security/Social Services & Welfare	2.1%	2.2%	1.7%	1.7%	2.5%	2.0%	1.9%	2.1%
Economic Services	16.0%	19.2%	20.2%	17.2%	22.6%	16.1%	17.5%	16.8%
Debt Service	1.2%	2.1%	4.3%	3.4%	2.7%	0.1%	4.0%	3.2%
Other Purposes	23.3%	25.0%	18.6%	21.5%	18.3%	21.6%	26.1%	19.5%

**STATEMENT OF INCOME AND EXPENDITURES
BY PROVINCE**



**STATEMENT OF INCOME AND EXPENDITURES
BY PROVINCE
CY 2004
(P 0.00)**

Region	Province	I N C O M E					
		Total Income	LOCAL SOURCES				
			Local Sources	Tax Revenue	TAX REVENUE		
					Real Property Tax	Business Tax	Other Taxes
	Grand Total	41,148,112,718	6,180,941,053	3,593,992,649	2,943,753,760	388,348,708	261,890,181
Region I	Regional Total	2,578,433,218	315,861,830	173,523,839	150,383,544	13,192,961	9,947,334
Region I	Ilocos Norte	418,756,304	61,612,144	28,952,032	25,670,643	2,429,962	851,428
Region I	Ilocos Sur	630,908,977	18,081,088	14,462,481	12,759,873	1,072,961	629,647
Region I	La Union	455,152,414	84,295,826	28,459,837	23,649,420	2,509,435	2,300,982
Region I	Pangasinan	1,073,615,523	151,872,773	101,649,489	88,303,608	7,180,604	6,165,277
Region II	Regional Total	2,366,698,000	194,011,000	114,595,000	70,645,000	32,448,000	11,502,000
Region II	Batanes	121,401,000	4,978,000	2,569,000	2,422,000	130,000	17,000
Region II	Cagayan	701,933,000	87,123,000	51,778,000	24,104,000	25,475,000	2,199,000
Region II	Isabela	935,086,000	53,851,000	40,972,000	30,289,000	4,158,000	6,525,000
Region II	Nueva Vizcaya	349,157,000	30,723,000	14,497,000	9,767,000	2,503,000	2,227,000
Region II	Quirino	259,121,000	17,336,000	4,779,000	4,063,000	182,000	534,000
Region III	Regional Total	4,461,077,608	933,599,531	611,637,101	482,324,958	80,105,129	49,207,014
Region III	Aurora	245,999,783	13,336,186	10,292,936	8,851,137	834,307	607,492
Region III	Bataan	517,100,086	191,577,214	154,037,222	143,383,151	4,940,635	5,713,436
Region III	Bulacan	1,255,450,000	445,654,000	289,673,000	210,290,000	49,603,000	29,780,000
Region III	Nueva Ecija	757,342,000	60,243,000	27,595,000	17,546,000	7,717,000	2,332,000
Region III	Pampanga	721,770,069	88,213,685	72,624,837	56,139,890	10,398,603	6,086,343
Region III	Tarlac	568,655,699	96,986,447	31,977,864	24,539,066	4,644,805	2,793,993
Region III	Zambales	394,759,972	37,588,998	25,436,241	21,575,714	1,966,779	1,893,748
Region IV-A	Regional Total	5,854,869,582	2,141,256,273	1,602,063,682	1,325,843,918	147,759,363	128,460,401
Region IV-A	Batangas	1,224,891,025	287,024,382	256,775,725	229,832,216	8,802,296	18,141,213
Region IV-A	Cavite	1,137,908,069	423,882,052	357,175,649	271,329,835	25,247,683	60,598,131
Region IV-A	Laguna	1,367,306,372	653,422,182	557,121,846	469,077,428	62,302,281	25,742,137
Region IV-A	Quezon	1,008,383,950	246,787,917	143,277,932	136,564,521	2,266,111	4,447,300
Region IV-A	Rizal	1,116,380,166	530,139,739	287,712,530	219,039,918	49,140,992	19,531,620
Region IV-B	Regional Total	2,026,475,790	127,650,276	67,267,633	54,570,042	8,808,386	3,889,205
Region IV-B	Marinduque*	208,096,000	13,530,000	5,746,000	4,806,000	708,000	232,000
Region IV-B	Occidental Mindoro	404,275,902	43,924,822	17,544,769	12,549,875	3,895,846	1,099,048
Region IV-B	Oriental Mindoro	441,728,094	39,315,110	23,730,049	20,097,222	2,227,377	1,405,450
Region IV-B	Palawan	727,543,795	19,665,345	14,753,815	12,170,945	1,574,163	1,008,707
Region IV-B	Romblon	244,832,000	11,215,000	5,493,000	4,946,000	403,000	144,000
Region V	Regional Total	2,715,628,929	184,519,702	114,500,898	83,195,745	23,078,957	8,226,196
Region V	Albay	555,576,801	49,514,842	28,291,166	22,022,742	4,726,751	1,541,672
Region V	Camarines Norte	376,003,915	35,357,651	18,477,901	12,440,475	4,687,063	1,350,364
Region V	Camarines Sur	650,505,000	51,068,000	40,616,000	25,314,000	12,653,000	2,649,000
Region V	Catanduanes	245,062,177	10,331,881	5,157,979	4,390,523	209,594	557,862
Region V	Masbate	447,720,581	12,829,281	9,850,302	9,476,084	233,249	140,969
Region V	Sorsogon	440,760,455	25,418,047	12,107,549	9,551,922	569,300	1,986,328
Region VI	Regional Total	3,251,418,130	412,355,940	221,543,850	194,500,330	16,370,180	10,673,340
Region VI	Aklan	329,073,880	40,413,300	12,315,020	10,531,270	1,006,590	777,160
Region VI	Antique	355,082,310	37,576,630	23,136,660	21,632,060	464,970	1,039,630
Region VI	Capiz	362,863,500	25,884,060	11,482,300	10,713,160	32,640	736,500
Region VI	Guimaras	174,356,350	19,289,910	9,762,010	9,156,300	417,120	188,590
Region VI	Iloilo	834,468,430	146,990,020	107,671,140	91,548,770	10,388,680	5,733,690
Region VI	Negros Occidental	1,195,573,660	142,202,020	57,176,720	50,918,770	4,060,180	2,197,770

**STATEMENT OF INCOME AND EXPENDITURES
BY PROVINCE
CY 2004
(P 0.00)**

Region	Province	I N C O M E					
		LOCAL SOURCES					
		NON-TAX REVENUE					
		Non-Tax Revenue	Regulatory Fees	Service/User Charges	Receipts from Economic Enterprise	Toll Fees	Other Receipts
	Grand Total	2,586,948,404	215,934,349	324,201,388	1,069,926,486	26,201,961	950,684,220
Region I	Regional Total	142,337,991	3,836,461	3,829,478	76,825,708	0	57,846,344
Region I	Ilocos Norte	32,660,111	3,346,515	841,841	22,096,545	0	6,375,210
Region I	Ilocos Sur	3,618,607	291,385	2,284,923	834,115	0	208,185
Region I	La Union	55,835,989	97,621	393,261	50,251,843	0	5,093,264
Region I	Pangasinan	50,223,284	100,940	309,453	3,643,205	0	46,169,685
Region II	Regional Total	79,416,000	1,777,000	757,000	64,308,000	0	12,574,000
Region II	Batanes	2,409,000	120,000	78,000	1,656,000	0	555,000
Region II	Cagayan	35,345,000	0	180,000	26,774,000	0	8,391,000
Region II	Isabela	12,879,000	627,000	190,000	11,040,000	0	1,022,000
Region II	Nueva Vizcaya	16,226,000	952,000	217,000	13,400,000	0	1,657,000
Region II	Quirino	12,557,000	78,000	92,000	11,438,000	0	949,000
Region III	Regional Total	321,962,430	87,336,649	3,703,151	122,060,359	0	108,862,270
Region III	Aurora	3,043,250	102,300	1,777,588	0	0	1,163,362
Region III	Bataan	37,539,992	268,618	109,020	31,000,978	0	6,161,376
Region III	Bulacan	155,981,000	84,420,000	0	14,319,000	0	57,242,000
Region III	Nueva Ecija	32,648,000	646,000	0	4,055,000	0	27,947,000
Region III	Pampanga	15,588,847	198,100	76,685	12,732,434	0	2,581,629
Region III	Tarlac	65,008,583	1,679,431	1,510,419	52,718,973	0	9,099,761
Region III	Zambales	12,152,757	22,200	229,440	7,233,975	0	4,667,142
Region IV-A	Regional Total	539,192,591	7,824,935	134,570,502	120,838,945	0	275,958,209
Region IV-A	Batangas	30,248,657	609,296	3,125,272	0	0	26,514,089
Region IV-A	Cavite	66,706,404	5,244,729	1,793,554	56,462,110	0	3,206,011
Region IV-A	Laguna	96,300,336	232,654	70,520,115	4,908,097	0	20,639,470
Region IV-A	Quezon	103,509,985	1,537,707	47,541,630	38,965,476	0	15,465,172
Region IV-A	Rizal	242,427,209	200,548	11,589,932	20,503,262	0	210,133,467
Region IV-B	Regional Total	60,382,643	1,499,156	17,907,421	14,977,112	20,335,311	5,663,643
Region IV-B	Marinduque*	7,784,000	8,000	122,000	5,042,000	0	2,612,000
Region IV-B	Occidental Mindoro	26,380,052	161,249	165,600	5,717,892	20,335,311	0
Region IV-B	Oriental Mindoro	15,585,061	1,006,907	14,263,842	0	0	314,311
Region IV-B	Palawan	4,911,530	0	970,979	2,199,220	0	1,741,332
Region IV-B	Romblon	5,722,000	323,000	2,385,000	2,018,000	0	996,000
Region V	Regional Total	70,018,804	3,116,864	8,892,515	27,169,654	0	30,839,772
Region V	Albay	21,223,676	885,724	1,156,088	9,184,860	0	9,997,005
Region V	Camarines Norte	16,879,750	1,506,652	793,072	0	0	14,580,026
Region V	Camarines Sur	10,452,000	126,000	1,677,000	6,662,000	0	1,987,000
Region V	Catanduanes	5,173,902	25,815	2,234,067	584,470	0	2,329,551
Region V	Masbate	2,978,979	225,760	2,469,291	17,625	0	266,303
Region V	Sorsogon	13,310,498	346,913	562,997	10,720,700	0	1,679,888
Region VI	Regional Total	190,812,090	8,685,010	39,471,560	116,039,900	5,866,650	20,748,970
Region VI	Aklan	28,098,280	10,470	8,482,030	8,687,030	5,866,650	5,052,100
Region VI	Antique	14,439,970	85,690	9,941,030	2,501,000	0	1,912,250
Region VI	Capiz	14,401,760	235,370	12,881,300	0	0	1,285,090
Region VI	Guimaras	9,527,900	178,800	1,259,030	7,378,650	0	711,420
Region VI	Iloilo	39,318,880	5,510	5,356,980	30,636,750	0	3,319,640
Region VI	Negros Occidental	85,025,300	8,169,170	1,551,190	66,836,470	0	8,468,470

**STATEMENT OF INCOME AND EXPENDITURES
BY PROVINCE
CY 2004
(P 0.00)**

Region	Province	I N C O M E			
		Shares from National Tax Collections	Extraordinary Receipts/Aids	Loans & Borrowings	Inter-Local Transfers
	Grand Total	33,592,660,123	374,891,565	670,714,186	328,905,791
Region I	Regional Total	2,262,399,713	171,675	0	0
Region I	Ilocos Norte	357,082,974	61,186	0	0
Region I	Ilocos Sur	612,748,016	79,873	0	0
Region I	La Union	370,825,973	30,616	0	0
Region I	Pangasinan	921,742,750	0	0	0
Region II	Regional Total	2,056,725,000	3,734,000	93,343,000	18,885,000
Region II	Batanes	116,423,000	0	0	0
Region II	Cagayan	614,810,000	0	0	0
Region II	Isabela	768,044,000	963,000	93,343,000	18,885,000
Region II	Nueva Vizcaya	318,183,000	251,000	0	0
Region II	Quirino	239,265,000	2,520,000	0	0
Region III	Regional Total	3,452,401,360	25,209,217	25,000,000	24,867,500
Region III	Aurora	232,663,596	0	0	0
Region III	Bataan	300,507,578	147,794	0	24,867,500
Region III	Bulacan	809,114,000	682,000	0	0
Region III	Nueva Ecija	696,906,000	193,000	0	0
Region III	Pampanga	609,556,384	24,000,000	0	0
Region III	Tarlac	471,669,252	0	0	0
Region III	Zambales	331,984,550	186,423	25,000,000	0
Region IV-A	Regional Total	3,483,935,700	4,545,875	225,131,734	0
Region IV-A	Batangas	711,757,408	977,500	225,131,734	0
Region IV-A	Cavite	711,149,347	2,876,669	0	0
Region IV-A	Laguna	713,884,190	0	0	0
Region IV-A	Quezon	761,582,555	13,478	0	0
Region IV-A	Rizal	585,562,200	678,227	0	0
Region IV-B	Regional Total	1,898,761,840	63,674	0	0
Region IV-B	Marinduque*	194,566,000	0	0	0
Region IV-B	Occidental Mindoro	360,351,080	0	0	0
Region IV-B	Oriental Mindoro	402,379,310	33,674	0	0
Region IV-B	Palawan	707,878,450	0	0	0
Region IV-B	Romblon	233,587,000	30,000	0	0
Region V	Regional Total	2,287,544,209	153,350,018	90,215,000	0
Region V	Albay	474,711,941	31,350,018	0	0
Region V	Camarines Norte	299,331,264	0	41,315,000	0
Region V	Camarines Sur	500,437,000	99,000,000	0	0
Region V	Catanduanes	234,730,296	0	0	0
Region V	Masbate	411,891,300	23,000,000	0	0
Region V	Sorsogon	366,442,408	0	48,900,000	0
Region VI	Regional Total	2,676,645,730	162,416,460	0	0
Region VI	Aklan	288,660,580	0	0	0
Region VI	Antique	317,505,680	0	0	0
Region VI	Capiz	331,633,740	5,345,700	0	0
Region VI	Guimaras	155,054,690	11,750	0	0
Region VI	Iloilo	687,478,410	0	0	0
Region VI	Negros Occidental	896,312,630	157,059,010	0	0

**STATEMENT OF INCOME AND EXPENDITURES
BY PROVINCE
CY 2004
(P 0.00)**

Region	Province	EXPENDITURES					
		Total Expenditures	General Public Services	Education, Culture & Sports/ Manpower Development	Health, Nutrition & Population Control	Labor and Employment	Housing and Community Development
	Grand Total	37,556,895,279	11,481,394,348	1,952,384,543	7,582,861,984	19,085,256	328,378,604
Region I	Regional Total	2,570,439,262	664,153,330	125,283,604	579,168,106	2,283,376	157,712,142
Region I	Ilocos Norte	473,703,727	142,799,044	12,775,537	101,159,928	0	0
Region I	Ilocos Sur	662,619,306	139,554,354	6,724,145	93,988,255	0	0
Region I	La Union	434,286,675	130,652,287	15,387,078	158,406,449	0	38,036,739
Region I	Pangasinan	999,829,555	251,147,644	90,396,844	225,613,474	2,283,376	119,675,404
Region II	Regional Total	2,006,437,000	731,748,000	46,366,000	331,875,000	0	75,522,000
Region II	Batanes	111,371,000	44,906,000	402,000	17,680,000	0	0
Region II	Cagayan	690,808,000	206,789,000	13,260,000	142,095,000	0	0
Region II	Isabela	703,992,000	274,589,000	24,755,000	111,269,000	0	75,522,000
Region II	Nueva Vizcaya	255,921,000	115,367,000	7,225,000	7,771,000	0	0
Region II	Quirino	244,345,000	90,097,000	724,000	53,060,000	0	0
Region III	Regional Total	4,051,202,702	1,159,274,670	236,078,173	801,900,517	16,801,880	19,526,635
Region III	Aurora	219,458,431	73,872,780	4,677,550	42,024,685	987,525	0
Region III	Bataan	427,395,217	130,451,999	47,408,279	58,839,330	2,317,014	0
Region III	Bulacan	1,177,307,000	342,562,000	113,962,000	155,075,000	11,988,000	0
Region III	Nueva Ecija	686,081,000	156,637,000	16,848,000	142,432,000	0	0
Region III	Pampanga	619,824,579	164,184,610	29,697,934	175,081,349	1,509,341	1,276,125
Region III	Tarlac	507,758,582	185,659,117	12,403,986	134,020,176	0	18,250,510
Region III	Zambales	413,377,893	105,907,164	11,080,425	94,427,976	0	0
Region IV-A	Regional Total	5,310,090,456	1,349,933,944	1,004,084,474	1,306,060,846	0	9,925,031
Region IV-A	Batangas	839,561,301	307,272,676	100,626,093	199,883,650	0	6,744,044
Region IV-A	Cavite	1,153,985,709	310,201,905	189,454,178	231,316,796	0	139,958
Region IV-A	Laguna	1,355,190,170	343,750,017	276,234,550	421,180,159	0	3,041,029
Region IV-A	Quezon	810,672,944	163,119,982	126,495,871	270,798,176	0	0
Region IV-A	Rizal	1,150,680,331	225,589,363	311,273,782	182,882,066	0	0
Region IV-B	Regional Total	1,805,587,154	680,134,015	38,468,921	394,715,478	0	14,474,656
Region IV-B	Marinduque*	199,572,000	60,528,000	2,200,000	62,867,000	0	0
Region IV-B	Occidental Mindoro	362,028,599	142,724,716	7,535,711	88,866,755	0	11,693,039
Region IV-B	Oriental Mindoro	385,876,059	162,365,406	10,912,453	80,530,873	0	2,781,617
Region IV-B	Palawan	624,475,795	241,689,193	14,478,756	88,562,850	0	0
Region IV-B	Romblon	233,634,700	72,826,700	3,342,000	73,888,000	0	0
Region V	Regional Total	2,554,450,159	711,143,962	81,853,254	503,823,432	0	2,350,664
Region V	Albay	502,596,302	160,351,356	9,231,119	74,585,764	0	0
Region V	Camarines Norte	373,391,708	90,799,753	5,324,763	73,597,039	0	0
Region V	Camarines Sur	630,731,000	197,306,000	49,052,000	71,982,000	0	2,000,000
Region V	Catanduanes	234,925,793	75,146,778	2,946,668	81,548,934	0	0
Region V	Masbate	381,012,074	91,864,600	5,668,282	93,447,029	0	0
Region V	Sorsogon	431,793,282	95,675,474	9,630,421	108,662,666	0	350,664
Region VI	Regional Total	2,914,334,940	754,499,970	123,801,060	570,198,200	0	4,845,490
Region VI	Aklan	340,561,920	84,297,520	5,713,670	122,972,250	0	0
Region VI	Antique	322,764,040	96,603,610	11,098,540	110,441,590	0	0
Region VI	Capiz	106,657,180	65,299,070	2,352,230	24,507,680	0	0
Region VI	Guimaras	200,270,330	82,224,100	2,587,070	28,994,720	0	0
Region VI	Iloilo	767,978,130	255,055,570	47,794,330	247,413,050	0	0
Region VI	Negros Occidental	1,176,103,340	171,020,100	54,255,220	35,868,910	0	4,845,490

**STATEMENT OF INCOME AND EXPENDITURES
BY PROVINCE**

CY 2004
(P 0.00)

Region	Province	EXPENDITURES				Excess (deficit) of Income over Expenditures
		Social Security /Social Services & Welfare	Economic Services	Debt Service	Other Purposes	
	Grand Total	575,651,740	6,272,549,693	1,082,041,540	8,262,547,572	3,591,217,439
Region I	Regional Total	18,213,052	334,769,764	107,180,241	581,675,646	7,993,956
Region I	Ilocos Norte	1,919,023	42,531,673	0	172,518,522	-54,947,422
Region I	Ilocos Sur	2,035,413	28,257,518	0	392,059,621	-31,710,329
Region I	La Union	2,559,533	71,289,785	2,855,620	15,099,184	20,865,740
Region I	Pangasinan	11,699,083	192,690,788	104,324,621	1,998,320	73,785,968
Region II	Regional Total	22,958,000	337,188,000	130,776,000	330,004,000	360,261,000
Region II	Batanes	2,181,000	24,411,000	0	21,791,000	10,030,000
Region II	Cagayan	6,696,000	116,907,000	69,086,000	135,975,000	11,125,000
Region II	Isabela	8,270,000	48,598,000	60,487,000	100,502,000	231,094,000
Region II	Nueva Vizcaya	3,534,000	90,200,000	0	31,824,000	93,236,000
Region II	Quirino	2,277,000	57,072,000	1,203,000	39,912,000	14,776,000
Region III	Regional Total	86,991,646	507,262,416	198,861,575	1,024,505,190	409,874,907
Region III	Aurora	3,007,410	56,409,991	0	38,478,489	26,541,352
Region III	Bataan	3,660,356	58,028,318	27,814,757	98,875,163	89,704,869
Region III	Bulacan	25,753,000	99,184,000	22,553,000	406,230,000	78,143,000
Region III	Nueva Ecija	44,989,000	108,845,000	88,763,000	127,567,000	71,261,000
Region III	Pampanga	6,618,642	84,726,899	0	156,729,679	101,945,490
Region III	Tarlac	1,823,856	11,455,924	45,137,192	99,007,823	60,897,117
Region III	Zambales	1,139,381	88,612,284	14,593,626	97,617,037	-18,617,922
Region IV-A	Regional Total	155,203,532	678,900,083	97,981,358	708,001,189	544,779,127
Region IV-A	Batangas	4,956,131	101,142,817	0	118,935,891	385,329,723
Region IV-A	Cavite	34,999,045	107,712,120	6,361,557	273,800,151	-16,077,640
Region IV-A	Laguna	35,842,231	201,332,537	0	73,809,647	12,116,202
Region IV-A	Quezon	5,677,198	87,430,438	23,498,916	133,652,363	197,711,007
Region IV-A	Rizal	73,728,928	181,282,172	68,120,884	107,803,137	-34,300,165
Region IV-B	Regional Total	18,286,278	301,739,657	153,070,274	204,697,875	220,888,636
Region IV-B	Marinduque*	2,836,000	39,529,000	554,000	31,058,000	8,524,000
Region IV-B	Occidental Mindoro	4,259,417	51,553,939	0	55,395,022	42,247,302
Region IV-B	Oriental Mindoro	5,228,038	101,600,086	0	22,457,585	55,852,034
Region IV-B	Palawan	3,372,823	73,386,632	131,776,274	71,209,268	103,068,000
Region IV-B	Romblon	2,590,000	35,670,000	20,740,000	24,578,000	11,197,300
Region V	Regional Total	32,550,969	465,344,863	57,022,695	700,360,320	161,178,770
Region V	Albay	10,452,380	102,576,976	32,760,066	112,638,642	52,980,499
Region V	Camarines Norte	6,209,587	59,775,037	0	137,685,529	2,612,207
Region V	Camarines Sur	5,799,000	105,373,000	0	199,219,000	19,774,000
Region V	Catanduanes	976,967	28,476,906	0	45,829,540	10,136,384
Region V	Masbate	2,120,027	76,453,571	0	111,458,565	66,708,507
Region V	Sorsogon	6,993,008	92,689,374	24,262,629	93,529,045	8,967,173
Region VI	Regional Total	26,255,130	588,137,760	48,941,990	797,655,340	337,083,190
Region VI	Aklan	761,250	46,110,830	14,897,500	65,808,900	-11,488,040
Region VI	Antique	2,319,710	45,908,470	0	56,392,120	32,318,270
Region VI	Capiz	1,291,430	13,206,770	0	0	256,206,320
Region VI	Guimaras	3,008,310	45,638,350	7,205,410	30,612,370	-25,913,980
Region VI	Iloilo	4,883,430	100,518,770	0	112,312,980	66,490,300
Region VI	Negros Occidental	13,991,000	336,754,570	26,839,080	532,528,970	19,470,320

**STATEMENT OF INCOME AND EXPENDITURES
BY PROVINCE CY 2004
(P 0.00)**

Region	Province	INCOME					
		Total Income	Local Sources	Tax Revenue	LOCAL SOURCES		
					TAX REVENUE		
				Real Property Tax	Business Tax	Other Taxes	
Region VII	Regional Total	2,801,081,068	449,916,039	149,533,213	120,127,178	15,455,918	13,950,117
Region VII	Bohol	605,003,073	63,650,225	34,986,318	28,279,101	5,797,775	909,442
Region VII	Cebu	1,347,540,180	279,591,468	87,182,794	67,047,504	8,350,862	11,784,428
Region VII	Negros Oriental	698,121,813	99,926,185	26,216,026	23,816,265	1,223,060	1,176,701
Region VII	Siquijor	150,416,002	6,748,162	1,148,075	984,308	84,221	79,545
Region VIII	Regional Total	2,501,989,422	144,266,902	66,523,634	59,515,255	4,143,322	2,865,058
Region VIII	Biliran	173,025,152	13,767,323	3,395,697	2,999,386	68,210	328,102
Region VIII	Eastern Samar	354,508,225	13,609,763	5,644,599	4,526,834	822,183	295,582
Region VIII	Leyte	754,586,608	55,008,501	37,977,276	36,214,656	855,925	906,695
Region VIII	Northern Samar	400,313,221	17,207,346	5,958,560	5,012,489	710,992	235,079
Region VIII	Southern Leyte	369,064,218	35,086,638	6,697,236	4,424,281	1,592,391	680,563
Region VIII	Samar	450,491,998	9,587,331	6,850,266	6,337,609	93,621	419,036
Region IX	Regional Total	2,384,039,928	222,900,907	32,519,355	26,145,943	4,513,261	1,860,151
Region IX	Basilan	295,730,779	1,890,699	412,314	245,060	102,180	65,074
Region IX	Sulu	305,028,765	703,219	415,817	374,409	5,334	36,073
Region IX	Tawi-Tawi*	246,405,900	0	0	0	0	0
Region IX	Zamb. Del Norte	712,557,276	176,727,653	7,669,910	5,334,009	1,431,729	904,172
Region IX	Zamb. Del Sur	477,406,806	25,290,999	12,462,326	9,789,395	2,120,463	552,468
Region IX	Zamboanga Sibugay	346,910,402	18,288,338	11,558,988	10,403,070	853,555	302,364
Region X	Regional Total	2,016,377,758	292,803,196	111,068,042	99,945,982	4,559,206	6,562,855
Region X	Bukidnon	718,061,989	122,445,538	35,584,786	27,943,952	2,921,790	4,719,044
Region X	Camiguin	140,120,766	8,006,624	2,057,583	1,697,998	237,782	121,804
Region X	Lanao Del Norte	378,433,314	49,181,992	12,864,355	12,276,274	409,514	178,568
Region X	Misamis Occidental	350,876,466	51,586,879	7,755,330	7,011,865	541,566	201,899
Region X	Misamis Oriental	428,885,223	61,582,163	52,805,987	51,015,892	448,554	1,341,540
Region XI	Regional Total	1,813,821,609	233,521,819	82,525,476	72,638,556	5,891,662	3,995,258
Region XI	Compostela Valley	484,437,303	76,433,556	23,468,750	20,511,974	2,197,614	759,163
Region XI	Davao Del Norte	480,169,414	101,127,121	27,880,188	22,487,807	2,991,188	2,401,193
Region XI	Davao Del Sur	452,368,601	29,858,247	16,769,639	15,843,498	395,593	530,548
Region XI	Davao Oriental	396,846,291	26,102,895	14,406,900	13,795,277	307,268	304,355
Region XII	Regional Total	2,977,901,863	229,359,160	124,714,247	104,366,950	15,402,231	4,945,066
Region XII	Lanao Del Sur	598,246,070	13,238,386	13,238,386	5,511,889	6,705,796	1,020,701
Region XII	Maguindanao	501,513,704	4,128,755	3,478,615	2,989,385	474,154	15,076
Region XII	North Cotabato	674,612,587	94,872,406	31,230,737	28,329,597	2,123,021	778,119
Region XII	Sarangani	325,557,350	25,180,897	16,653,717	13,278,908	2,448,027	926,782
Region XII	South Cotabato	466,377,618	70,838,137	42,777,806	38,331,462	2,699,861	1,746,483
Region XII	Sultan Kudarat	411,594,533	21,100,578	17,334,985	15,925,709	951,372	457,904
CAR	Regional Total	1,739,345,599	128,849,247	41,181,847	33,422,663	4,847,793	2,911,392
CAR	Abra	389,581,833	28,078,513	3,243,858	2,682,377	309,073	252,407
CAR	Apayao	276,334,160	1,941,596	1,649,161	631,835	1,002,674	14,651
CAR	Benguet	353,475,860	65,522,628	28,854,945	24,483,982	2,285,510	2,085,452
CAR	Ifugao	245,461,617	17,213,819	2,977,391	2,419,177	364,235	193,979
CAR	Kalinga	260,089,172	9,342,229	2,324,505	1,663,191	376,869	284,444
CAR	Mt. Province	214,402,957	6,750,462	2,131,989	1,542,100	509,431	80,457
CARAGA	Regional Total	1,658,954,213	170,069,232	80,794,832	66,127,696	11,772,340	2,894,796
CARAGA	Agusan Del Norte	316,300,508	46,480,417	14,608,558	12,176,703	1,925,251	506,605
CARAGA	Agusan Del Sur	572,229,553	69,813,991	24,436,917	15,807,027	8,072,107	557,783
CARAGA	Surigao Del Norte	369,389,072	33,986,116	25,983,672	23,812,849	645,876	1,524,946
CARAGA	Surigao Del Sur	401,035,080	19,788,708	15,765,685	14,331,117	1,129,106	305,462

*Reactivated SIE data from CY 2003

**STATEMENT OF INCOME AND EXPENDITURES
BY PROVINCE CY 2004
(P 0.00)**

Region	Province	I N C O M E					
		LOCAL SOURCES					
		NON-TAX REVENUE					
		Non-Tax Revenue	Regulatory Fees	Service/User Charges	Receipts from Economic Enterprise	Toll Fees	Other Receipts
Region VII	Regional Total	300,382,827	51,625,578	19,091,919	30,908,101	0	198,757,229
Region VII	Bohol	28,663,907	9,842	13,967,567	2,748,843	0	11,937,655
Region VII	Cebu	192,408,673	283,213	993,470	24,851,180	0	166,280,810
Region VII	Negros Oriental	73,710,159	51,286,614	167,735	2,328,121	0	19,927,689
Region VII	Siquijor	5,600,087	45,909	3,963,146	979,957	0	611,075
Region VIII	Regional Total	77,743,268	594,954	19,631,884	29,896,894	0	27,619,535
Region VIII	Biliran	10,371,625	29,815	8,098,969	608,454	0	1,634,388
Region VIII	Eastern Samar	7,965,164	0	72,390	7,651,240	0	241,534
Region VIII	Leyte	17,031,225	10,734	10,491,901	978,746	0	5,549,844
Region VIII	Northern Samar	11,248,786	104,745	0	10,641,434	0	502,607
Region VIII	Southern Leyte	28,389,402	438,660	925,509	7,839,987	0	19,185,245
Region VIII	Samar	2,737,065	11,000	43,115	2,177,032	0	505,918
Region IX	Regional Total	190,381,552	858,700	3,424,711	147,703,606	0	38,394,535
Region IX	Basilan	1,478,384	0	62,850	1,394,292	0	21,243
Region IX	Sulu	287,402	0	4,810	188,113	0	94,480
Region IX	Tawi-Tawi*	0	0	0	0	0	0
Region IX	Zamb. Del Norte	169,057,743	12,800	752,411	130,569,081	0	37,723,451
Region IX	Zamb. Del Sur	12,828,673	344,519	1,106,777	11,368,046	0	9,331
Region IX	Zamboanga Sibugay	6,729,349	501,381	1,497,862	4,184,075	0	546,032
Region X	Regional Total	181,735,153	1,129,993	8,775,200	79,455,850	0	92,374,110
Region X	Bukidnon	86,860,751	470,860	0	4,709,613	0	81,680,278
Region X	Camiguin	5,949,041	24,240	106,640	4,570,373	0	1,247,788
Region X	Lanao Del Norte	36,317,637	351,920	59,570	32,643,517	0	3,262,629
Region X	Misamis Occidental	43,831,549	282,973	8,495,434	32,058,337	0	2,994,804
Region X	Misamis Oriental	8,776,176	0	113,556	5,474,010	0	3,188,610
Region XI	Regional Total	150,996,343	1,764,499	11,512,277	116,023,598	0	21,695,970
Region XI	Compostela Valley	52,964,806	0	307,850	40,914,239	0	11,742,718
Region XI	Davao Del Norte	73,246,933	1,685,004	10,252,493	55,988,898	0	5,320,538
Region XI	Davao Del Sur	13,088,608	0	735,565	9,132,339	0	3,220,704
Region XI	Davao Oriental	11,695,995	79,495	216,369	9,988,123	0	1,412,009
Region XII	Regional Total	104,644,913	41,176,066	1,861,843	33,077,004	0	28,529,999
Region XII	Lanao Del Sur	0	0	0	0	0	0
Region XII	Maguindanao	650,140	0	640	4,500	0	645,000
Region XII	North Cotabato	63,641,669	22,213,434	805,638	27,307,354	0	13,315,243
Region XII	Sarangani	8,527,180	665,275	573,817	0	0	7,288,088
Region XII	South Cotabato	28,060,331	18,240,332	158,992	3,509,539	0	6,151,468
Region XII	Sultan Kudarat	3,765,593	57,025	322,756	2,255,612	0	1,130,199
CAR	Regional Total	87,667,399	1,266,701	8,611,176	59,194,839	0	18,594,683
CAR	Abra	24,834,655	52,040	3,207,255	14,084,943	0	7,490,417
CAR	Apayao	292,436	43,840	15,404	0	0	233,192
CAR	Benguet	36,667,683	963,756	295,341	29,023,209	0	6,385,377
CAR	Ifugao	14,236,428	7,515	4,791,133	6,732,912	0	2,704,868
CAR	Kalinga	7,017,724	56,320	100,490	6,729,678	0	131,236
CAR	Mt. Province	4,618,474	143,230	201,554	2,624,097	0	1,649,593
CARAGA	Regional Total	89,274,400	3,441,782	42,160,750	31,446,916	0	12,224,952
CARAGA	Agusan Del Norte	31,871,859	1,325,845	19,392,176	8,586,171	0	2,567,666
CARAGA	Agusan Del Sur	45,377,074	2,011,672	18,972,415	20,292,956	0	4,100,031
CARAGA	Surigao Del Norte	8,002,444	77,200	2,841,534	1,282,549	0	3,801,161
CARAGA	Surigao Del Sur	4,023,024	27,065	954,625	1,285,240	0	1,756,094

**STATEMENT OF INCOME AND EXPENDITURES
BY PROVINCE CY 2004
(P 0.00)**

Region	Province	I N C O M E			
		Shares from National Tax Collections	Extraordinary Receipts/Aids	Loans & Borrowings	Inter-Local Transfers
Region VII	Regional Total	2,189,569,991	2,685,822	0	158,909,215
Region VII	Bohol	541,284,360	68,488	0	0
Region VII	Cebu	907,885,979	1,153,519	0	158,909,215
Region VII	Negros Oriental	596,731,813	1,463,815	0	0
Region VII	Siquijor	143,667,840	0	0	0
Region VIII	Regional Total	2,268,565,647	21,131,293	68,025,580	0
Region VIII	Biliran	159,246,903	10,927	0	0
Region VIII	Eastern Samar	340,857,417	41,045	0	0
Region VIII	Leyte	699,336,519	241,587	0	0
Region VIII	Northern Samar	362,606,330	20,499,545	0	0
Region VIII	Southern Leyte	265,917,118	34,883	68,025,580	0
Region VIII	Samar	440,601,360	303,307	0	0
Region IX	Regional Total	2,118,410,734	164,265	42,564,022	0
Region IX	Basilan	251,276,058	0	42,564,022	0
Region IX	Sulu	304,325,546	0	0	0
Region IX	Tawi-Tawi*	246,405,900	0	0	0
Region IX	Zamb. Del Norte	535,829,623	0	0	0
Region IX	Zamb. Del Sur	452,008,395	107,412	0	0
Region IX	Zamboanga Sibugay	328,565,212	56,853	0	0
Region X	Regional Total	1,640,238,390	275,324	83,060,849	0
Region X	Bukidnon	512,538,264	17,338	83,060,849	0
Region X	Camiguin	132,114,142	0	0	0
Region X	Lanao Del Norte	329,147,119	104,203	0	0
Region X	Misamis Occidental	299,236,705	52,883	0	0
Region X	Misamis Oriental	367,202,160	100,900	0	0
Region XI	Regional Total	1,533,176,255	0	0	47,123,535
Region XI	Compostela Valley	360,880,212	0	0	47,123,535
Region XI	Davao Del Norte	379,042,293	0	0	0
Region XI	Davao Del Sur	422,510,354	0	0	0
Region XI	Davao Oriental	370,743,396	0	0	0
Region XII	Regional Total	2,747,542,599	1,000,104	0	0
Region XII	Lanao Del Sur	585,007,684	0	0	0
Region XII	Maguindanao	497,384,949	0	0	0
Region XII	North Cotabato	579,594,594	145,587	0	0
Region XII	Sarangani	299,636,900	739,552	0	0
Region XII	South Cotabato	395,505,312	34,169	0	0
Region XII	Sultan Kudarat	390,413,160	80,796	0	0
CAR	Regional Total	1,487,895,492	106,319	43,374,000	79,120,542
CAR	Abra	283,497,742	7,215	0	77,998,363
CAR	Apayao	231,018,564	0	43,374,000	0
CAR	Benguet	287,854,129	99,104	0	0
CAR	Ifugao	228,247,799	0	0	0
CAR	Kalinga	249,624,764	0	0	1,122,179
CAR	Mt. Province	207,652,495	0	0	0
CARAGA	Regional Total	1,488,847,462	37,519	0	0
CARAGA	Agusan Del Norte	269,782,572	37,519	0	0
CARAGA	Agusan Del Sur	502,415,562	0	0	0
CARAGA	Surigao Del Norte	335,402,956	0	0	0
CARAGA	Surigao Del Sur	381,246,372	0	0	0

*Reactivated SIE data from CY 2003

STATEMENT OF INCOME AND EXPENDITURES
BY PROVINCE CY 2004
(P 0.00)

Region	Province	EXPENDITURES					
		Total Expenditures	General Public Services	Education, Culture & Sports/ Manpower Development	Health, Nutrition & Population Control	Labor and Employment	Housing and Community Development
Region VII	Regional Total	2,831,685,958	862,573,859	59,733,817	558,448,361	0	162,315
Region VII	Bohol	588,803,990	205,923,120	15,525,361	121,031,700	0	0
Region VII	Cebu	1,506,550,129	480,649,953	26,905,293	170,679,062	0	162,315
Region VII	Negros Oriental	602,349,231	138,123,754	16,428,117	230,229,424	0	0
Region VII	Siquijor	133,982,608	37,877,031	875,046	36,508,175	0	0
Region VIII	Regional Total	2,230,418,327	665,049,997	27,845,469	676,472,870	0	3,653,720
Region VIII	Biliran	117,363,491	41,994,193	1,322,164	30,329,246	0	0
Region VIII	Eastern Samar	342,736,356	100,916,027	2,516,393	115,177,981	0	0
Region VIII	Leyte	690,592,835	185,800,251	14,518,791	214,518,262	0	3,653,720
Region VIII	Northern Samar	358,199,615	88,104,230	2,827,201	136,735,638	0	0
Region VIII	Southern Leyte	318,144,030	72,988,955	1,977,410	87,490,801	0	0
Region VIII	Samar	403,382,000	175,246,341	4,683,510	92,220,943	0	0
Region IX	Regional Total	2,079,888,231	746,288,934	20,427,359	151,917,565	0	26,330,801
Region IX	Basilan	263,108,147	109,952,341	121,108	14,184,262	0	0
Region IX	Sulu	297,483,241	114,295,654	0	4,393,316	0	0
Region IX	Tawi-Tawi*	236,988,392	136,788,417	2,397,718	789,290	0	26,330,801
Region IX	Zamb. Del Norte	549,790,230	88,121,028	8,043,497	106,295,628	0	0
Region IX	Zamb. Del Sur	419,609,668	151,120,730	4,188,135	13,739,776	0	0
Region IX	Zamboanga Sibugay	312,908,553	146,010,765	5,676,902	12,515,294	0	0
Region X	Regional Total	1,921,314,087	656,868,608	50,772,410	523,796,806	0	1,185,995
Region X	Bukidnon	774,943,641	222,863,677	25,159,616	295,183,387	0	1,185,995
Region X	Camiguin	132,438,591	35,504,478	647,044	46,175,132	0	0
Region X	Lanao Del Norte	263,068,083	110,009,430	5,072,278	61,458,952	0	0
Region X	Misamis Occidental	345,575,138	131,970,100	2,794,358	94,465,840	0	0
Region X	Misamis Oriental	405,288,635	156,520,923	17,099,113	26,513,496	0	0
Region XI	Regional Total	1,611,392,611	577,276,020	40,524,318	213,284,460	0	0
Region XI	Compostela Valley	361,049,411	164,864,183	13,916,623	39,685,418	0	0
Region XI	Davao Del Norte	425,227,860	172,495,322	13,277,396	45,840,000	0	0
Region XI	Davao Del Sur	419,697,551	115,965,025	6,638,040	62,212,155	0	0
Region XI	Davao Oriental	405,417,789	123,951,490	6,692,258	65,546,887	0	0
Region XII	Regional Total	2,697,829,556	963,689,924	57,164,130	303,625,878	0	12,689,155
Region XII	Lanao Del Sur	525,506,976	112,729,871	0	0	0	0
Region XII	Maguindanao	438,359,373	239,244,288	2,182,981	8,804,375	0	0
Region XII	North Cotabato	571,195,460	190,596,283	14,761,546	107,765,441	0	0
Region XII	Sarangani	306,864,258	161,248,411	9,828,407	41,640,350	0	3,173,146
Region XII	South Cotabato	467,474,810	142,720,117	23,523,042	83,523,044	0	9,516,008
Region XII	Sultan Kudarat	388,428,680	117,150,955	6,868,154	61,892,669	0	0
CAR	Regional Total	1,504,523,955	444,271,657	16,243,758	407,846,788	0	0
CAR	Abra	363,175,940	68,194,824	2,395,400	90,753,493	0	0
CAR	Apayao	258,452,833	88,767,158	162,500	36,033,724	0	0
CAR	Benguet	273,703,848	90,346,083	9,678,207	84,591,034	0	0
CAR	Ifugao	208,420,216	66,845,306	1,613,710	70,080,974	0	0
CAR	Kalinga	245,521,189	66,732,838	1,857,467	79,487,389	0	0
CAR	Mt. Province	155,249,929	63,385,448	536,474	46,900,173	0	0
CARAGA	Regional Total	1,467,300,881	514,487,459	23,737,795	259,727,675	0	0
CARAGA	Agusan Del Norte	293,293,262	68,255,720	7,060,008	81,595,078	0	0
CARAGA	Agusan Del Sur	574,427,856	194,562,371	7,930,140	83,091,274	0	0
CARAGA	Surigao Del Norte	257,736,011	102,624,650	3,185,700	25,182,158	0	0
CARAGA	Surigao Del Sur	341,843,752	149,044,718	5,561,947	69,859,166	0	0

*Reactivated SIE data from CY 2003

**STATEMENT OF INCOME AND EXPENDITURES
BY PROVINCE CY 2004
(P 0.00)**

Region	Province	EXPENDITURES				Excess (deficit) of Income over Expenditures
		Social Security /Social Services & Welfare	Economic Services	Debt Service	Other Purposes	
Region VII	Regional Total	29,706,691	499,326,588	0	821,734,327	-30,604,891
Region VII	Bohol	7,178,077	81,170,217	0	157,975,514	16,199,083
Region VII	Cebu	2,089,915	279,292,469	0	546,771,122	-159,009,949
Region VII	Negros Oriental	19,282,253	111,102,284	0	87,183,399	95,772,581
Region VII	Siquijor	1,156,446	27,761,617	0	29,804,292	16,433,393
Region VIII	Regional Total	21,113,822	329,592,962	3,249,603	503,439,882	271,571,095
Region VIII	Biliran	3,107,561	18,597,479	0	22,012,847	55,661,661
Region VIII	Eastern Samar	2,171,683	47,488,839	0	74,465,433	11,771,869
Region VIII	Leyte	5,030,020	113,901,602	0	153,170,188	63,993,773
Region VIII	Northern Samar	3,599,765	34,388,001	0	92,544,781	42,113,606
Region VIII	Southern Leyte	2,255,890	60,435,911	0	92,995,062	50,920,189
Region VIII	Samar	4,948,903	54,781,130	3,249,603	68,251,570	47,109,997
Region IX	Regional Total	29,747,504	546,481,255	18,281,049	540,413,764	304,151,697
Region IX	Basilan	2,218,287	37,821,031	0	98,811,120	32,622,632
Region IX	Sulu	0	32,156,361	0	146,637,909	7,545,524
Region IX	Tawi-Tawi*	1,584,662	37,676,737	10,140,862	21,279,905	9,417,508
Region IX	Zamb. Del Norte	10,337,854	231,462,810	8,140,187	97,389,227	162,767,046
Region IX	Zamb. Del Sur	7,874,781	119,166,930	0	123,519,317	57,797,138
Region IX	Zamboanga Sibugay	7,731,920	88,197,386	0	52,776,286	34,001,849
Region X	Regional Total	13,769,083	318,859,238	86,772,315	269,289,633	95,063,671
Region X	Bukidnon	4,290,986	98,064,430	11,303,098	116,892,452	-56,881,652
Region X	Camiguin	962,636	23,611,134	3,297,457	22,240,710	7,682,175
Region X	Lanao Del Norte	1,699,917	32,294,503	41,942,127	10,590,875	115,365,232
Region X	Misamis Occidental	5,052,408	49,699,468	0	61,592,965	5,301,328
Region X	Misamis Oriental	1,763,136	115,189,702	30,229,633	57,972,631	23,596,588
Region XI	Regional Total	22,204,016	261,214,729	80,078,865	416,810,202	202,428,998
Region XI	Compostela Valley	0	67,221,941	26,835,683	48,525,563	123,387,892
Region XI	Davao Del Norte	7,958,412	62,507,279	29,044,063	94,105,388	54,941,554
Region XI	Davao Del Sur	9,276,310	54,718,048	2,162,000	168,725,973	32,671,050
Region XI	Davao Oriental	4,969,295	76,767,461	22,037,119	105,453,279	-8,571,498
Region XII	Regional Total	60,666,852	682,776,913	65,637,826	551,578,878	280,072,306
Region XII	Lanao Del Sur	0	262,560,268	0	150,216,837	72,739,094
Region XII	Maguindanao	6,711,617	65,137,400	0	116,278,712	63,154,331
Region XII	North Cotabato	24,450,992	108,911,763	47,655,876	77,053,558	103,417,127
Region XII	Sarangani	4,883,596	58,672,786	0	27,417,562	18,693,092
Region XII	South Cotabato	17,903,352	60,857,038	17,981,950	111,450,259	-1,097,192
Region XII	Sultan Kudarat	6,717,295	126,637,657	0	69,161,951	23,165,854
CAR	Regional Total	20,701,376	236,464,516	1,382,934	377,612,925	234,821,645
CAR	Abra	5,730,484	56,612,246	1,382,934	138,106,558	26,405,893
CAR	Apayao	3,465,715	29,518,144	0	100,505,593	17,881,327
CAR	Benguet	3,384,936	48,595,052	0	37,108,535	79,772,013
CAR	Ifugao	3,036,019	33,856,846	0	32,987,361	37,041,401
CAR	Kalinga	4,085,364	31,898,023	0	61,460,108	14,567,983
CAR	Mt. Province	998,859	35,984,205	0	7,444,770	59,153,028
CARAGA	Regional Total	17,283,788	184,490,948	32,804,816	434,768,400	191,653,332
CARAGA	Agusan Del Norte	2,598,570	34,152,755	13,236,368	86,394,763	23,007,247
CARAGA	Agusan Del Sur	6,531,737	65,401,317	19,568,448	197,342,570	-2,198,303
CARAGA	Surigao Del Norte	7,017,749	38,084,896	0	81,640,859	111,653,060
CARAGA	Surigao Del Sur	1,135,732	46,851,981	0	69,390,209	59,191,328

*Reactivated SIE data from CY 2003

STATEMENT OF INCOME AND EXPENDITURES

BY CITIES

**STATEMENT OF INCOME AND EXPENDITURES
BY CITIES CY 2004
(P 0.00)**

Region	CITY	INCOME					
		Total Income	LOCAL SOURCES				
			Local Sources	Tax Revenue	TAX REVENUE		
					Real Property Tax	Business Tax	Other Taxes
	Grand Total	74,147,563,687	38,952,615,881	31,862,910,019	14,602,115,285	15,622,706,270	1,638,088,464
NCR	Regional Total	33,015,659,748	24,995,788,967	22,031,343,807	9,738,475,792	11,308,923,703	983,944,312
NCR	Kalookan City	1,681,228,300	852,216,622	676,958,435	329,691,137	299,029,324	48,237,974
NCR	Las Piñas City	1,098,864,570	722,920,910	593,247,980	317,039,540	232,696,560	43,511,880
NCR	Makati City	6,247,252,757	5,517,950,894	5,179,851,705	2,508,642,036	2,480,830,542	190,379,127
NCR	Malabon City	507,966,303	230,571,628	170,563,368	105,440,926	58,385,551	6,736,890
NCR	Mandaluyong City	1,601,355,056	1,142,906,888	1,045,008,436	405,771,665	606,598,556	32,638,215
NCR	Manila City	6,029,451,082	4,098,495,303	3,500,334,085	1,091,135,381	2,234,148,853	175,049,851
NCR	Marikina City	1,123,019,340	804,771,830	625,325,460	403,136,500	202,247,920	19,941,040
NCR	Muntinlupa City	1,250,547,925	928,983,761	744,081,832	404,045,793	307,822,996	32,213,043
NCR	Parañaque City	1,590,065,300	1,257,408,350	1,214,899,520	691,056,140	493,087,040	30,756,340
NCR	Pasay City	1,246,598,000	1,071,555,000	771,510,000	490,602,000	251,542,000	29,366,000
NCR	Pasig City	2,969,849,218	2,563,022,902	2,180,466,520	1,006,017,728	1,099,280,205	75,168,586
NCR	Quezon City	6,496,282,210	5,017,075,110	4,633,492,990	1,599,089,600	2,753,350,830	281,052,560
NCR	Valenzuela City	1,173,179,686	787,909,768	695,603,478	386,807,346	289,903,327	18,892,805
Region I	Regional Total	1,910,565,057	640,510,936	340,049,760	115,850,708	198,694,946	25,504,106
Region I	Alaminos City	186,148,418	31,606,844	21,312,475	13,039,819	6,563,918	1,708,738
Region I	Candon City	156,755,581	31,713,505	12,415,716	4,851,642	6,942,995	621,080
Region I	Dagupan City	306,366,714	146,956,986	113,632,843	30,337,589	71,504,109	11,791,146
Region I	Laoag City	270,220,907	112,456,248	58,027,181	20,863,987	34,267,311	2,895,883
Region I	San Carlos City	280,745,552	44,963,446	17,502,779	8,543,229	6,634,465	2,325,085
Region I	San Fernando City	262,353,682	79,193,934	52,162,620	17,397,717	32,012,731	2,752,172
Region I	Urdaneta City	297,760,619	146,802,120	43,892,944	13,903,495	28,035,190	1,954,259
Region I	Vigan City	150,213,583	46,817,852	21,103,203	6,913,232	12,734,228	1,455,743
Region II	Regional Total	1,051,284,229	224,398,176	136,109,668	42,441,942	83,439,542	10,228,184
Region II	Cauayan City	277,973,591	63,226,108	38,702,140	10,602,861	25,739,397	2,359,882
Region II	Santiago City	496,199,638	62,951,068	38,648,528	9,396,081	26,479,145	2,773,302
Region II	Tuguegarao City	277,111,000	98,221,000	58,759,000	22,443,000	31,221,000	5,095,000
Region III	Regional Total	4,586,042,554	1,790,619,895	891,337,209	439,193,803	388,933,075	63,210,330
Region III	Angeles City	533,971,400	196,667,020	165,507,892	94,517,726	59,036,936	11,953,231
Region III	Balanga City	190,296,000	50,360,000	34,296,000	15,709,000	16,241,000	2,346,000
Region III	Cabanatuan City	339,605,316	121,254,861	97,229,809	42,260,400	46,081,473	8,887,936
Region III	Gapan City	189,898,975	25,272,811	15,032,800	4,648,345	7,990,233	2,394,222
Region III	Malolos City	331,760,326	140,481,083	114,502,952	73,820,525	36,249,637	4,432,790
Region III	Munoz City	223,221,822	18,406,132	10,831,333	5,029,251	4,725,664	1,076,418
Region III	Olongapo City	1,118,463,848	761,750,582	90,584,728	50,342,843	35,334,777	4,907,109
Region III	Palayan City	117,342,000	4,289,000	2,927,000	1,899,000	659,000	369,000
Region III	San Fernando City	410,744,724	189,313,188	164,046,094	55,988,595	101,521,199	6,536,300
Region III	San Jose City	294,677,499	59,400,509	33,423,171	18,830,486	8,655,430	5,937,255
Region III	San Jose del Monte City	376,921,000	90,517,000	68,188,000	43,954,000	16,526,000	7,708,000
Region III	Tarlac City	459,139,644	132,907,709	94,767,429	32,193,633	55,911,726	6,662,069

**STATEMENT OF INCOME AND EXPENDITURES
BY CITIES CY 2004
(P 0.00)**

Region	CITY	I N C O M E					
		LOCAL SOURCES					
		NON-TAX REVENUE					
		Non-Tax Revenue	Regulatory Fees	Service/User Charges	Receipts from Economic Enterprise	Toll Fees	Other Receipts
	Grand Total	7,089,705,862	2,045,626,628	1,060,924,108	2,818,073,737	4,727,024	1,160,354,365
NCR	Regional Total	2,964,445,160	1,330,445,155	498,571,923	536,811,320	0	598,616,761
NCR	Kalookan City	175,258,187	106,302,341	35,209,748	32,718,660	0	1,027,438
NCR	Las Piñas City	129,672,930	57,621,250	54,319,000	1,685,780	0	16,046,900
NCR	Makati City	338,099,190	214,303,596	45,243,635	37,601,207	0	40,950,752
NCR	Malabon City	60,008,260	34,044,828	8,829,812	3,633,620	0	13,500,000
NCR	Mandaluyong City	97,898,452	45,938,660	26,051,831	19,392,295	0	6,515,666
NCR	Manila City	598,161,218	249,245,657	147,225,519	173,992,433	0	27,697,609
NCR	Marikina City	179,446,370	20,390,560	38,328,440	69,465,820	0	51,261,550
NCR	Muntinlupa City	184,901,930	147,678,641	15,644,447	19,969,638	0	1,609,203
NCR	Parañaque City	42,508,830	26,360,760	8,010,500	6,775,680	0	1,361,890
NCR	Pasay City	300,045,000	109,461,000	18,459,000	50,521,000	0	121,604,000
NCR	Pasig City	382,556,383	74,385,831	16,998,646	93,036,530	0	198,135,375
NCR	Quezon City	383,582,120	184,421,550	65,813,730	20,302,230	0	113,044,610
NCR	Valenzuela City	92,306,290	60,290,480	18,437,616	7,716,426	0	5,861,768
Region I	Regional Total	300,461,176	50,117,286	22,990,172	215,372,255	0	11,981,464
Region I	Alaminos City	10,294,370	3,020,947	2,158,512	3,540,959	0	1,573,951
Region I	Candon City	19,297,789	2,806,712	1,386,234	12,364,895	0	2,739,947
Region I	Dagupan City	33,324,143	9,964,092	4,257,611	17,089,230	0	2,013,211
Region I	Laoag City	54,429,067	6,992,019	7,218,523	38,941,809	0	1,276,717
Region I	San Carlos City	27,460,668	5,074,757	1,578,200	20,797,471	0	10,240
Region I	San Fernando City	27,031,315	5,550,093	2,561,728	15,384,755	0	3,534,739
Region I	Urdaneta City	102,909,176	14,645,183	2,638,947	85,625,046	0	0
Region I	Vigan City	25,714,649	2,063,484	1,190,417	21,628,089	0	832,659
Region II	Regional Total	88,288,508	18,224,459	11,050,973	49,297,556	0	9,715,521
Region II	Cauayan City	24,523,969	4,274,461	3,591,920	15,821,869	0	835,718
Region II	Santiago City	24,302,540	3,311,997	3,791,053	14,235,687	0	2,963,802
Region II	Tuguegarao City	39,462,000	10,638,000	3,668,000	19,240,000	0	5,916,000
Region III	Regional Total	899,282,687	85,326,127	69,925,147	732,449,924	0	11,581,488
Region III	Angeles City	31,159,128	13,943,932	4,255,449	11,044,194	0	1,915,552
Region III	Balanga City	16,064,000	3,940,000	1,607,000	10,287,000	0	230,000
Region III	Cabanatuan City	24,025,052	6,442,866	2,619,116	14,722,160	0	240,910
Region III	Gapan City	10,240,011	1,210,248	397,064	8,632,698	0	0
Region III	Malolos City	25,978,131	5,739,393	7,759,619	12,095,608	0	383,511
Region III	Munoz City	7,574,800	831,452	1,525,923	5,013,051	0	204,373
Region III	Olongapo City	671,165,853	15,471,263	25,331,988	629,319,848	0	1,042,754
Region III	Palayan City	1,362,000	370,000	144,000	601,000	0	247,000
Region III	San Fernando City	25,267,094	9,945,091	4,518,444	9,051,780	0	1,751,779
Region III	San Jose City	25,977,338	3,468,315	3,847,145	18,661,878	0	0
Region III	San Jose del Monte City	22,329,000	8,250,000	11,306,000	913,000	0	1,860,000
Region III	Tarlac City	38,140,280	15,713,566	6,613,399	12,107,708	0	3,705,608

**STATEMENT OF INCOME AND EXPENDITURES
BY CITIES CY 2004
(P 0.00)**

Region	CITY	I N C O M E			
		Shares from National Tax Collections	Extraordinary Receipts/Aids	Loans & Borrowings	Inter-Local Transfers
	Grand Total	32,442,917,823	193,972,460	1,706,057,047	852,000,478
NCR	Regional Total	6,862,744,463	46,750,988	280,029,553	830,345,778
NCR	Kalookan City	805,991,678	23,020,000	0	0
NCR	Las Piñas City	375,943,660	0	0	0
NCR	Makati City	620,435,808	0	108,866,055	0
NCR	Malabon City	275,830,830	1,563,845	0	0
NCR	Mandaluyong City	275,383,938	11,900,732	171,163,498	0
NCR	Manila City	1,100,610,001	0	0	830,345,778
NCR	Marikina City	316,064,310	2,183,200	0	0
NCR	Muntinlupa City	320,666,822	897,342	0	0
NCR	Parañaque City	332,656,950	0	0	0
NCR	Pasay City	175,043,000	0	0	0
NCR	Pasig City	406,826,316	0	0	0
NCR	Quezon City	1,472,766,930	6,440,170	0	0
NCR	Valenzuela City	384,524,219	745,699	0	0
Region I	Regional Total	1,236,246,202	4,499,928	29,307,990	0
Region I	Alaminos City	154,156,986	384,588	0	0
Region I	Candon City	125,042,076	0	0	0
Region I	Dagupan City	158,946,245	463,483	0	0
Region I	Laoag City	154,164,659	3,600,000	0	0
Region I	San Carlos City	206,434,737	39,378	29,307,990	0
Region I	San Fernando City	183,159,748	0	0	0
Region I	Urdaneta City	150,958,499	0	0	0
Region I	Vigan City	103,383,252	12,478	0	0
Region II	Regional Total	826,601,263	284,790	0	0
Region II	Cauayan City	214,747,483	0	0	0
Region II	Santiago City	432,963,780	284,790	0	0
Region II	Tuguegarao City	178,890,000	0	0	0
Region III	Regional Total	2,529,426,858	38,410,192	227,585,609	0
Region III	Angeles City	260,464,257	21,000,000	55,840,124	0
Region III	Balanga City	139,936,000	0	0	0
Region III	Cabanatuan City	218,080,440	270,015	0	0
Region III	Gapan City	164,622,764	3,400	0	0
Region III	Malolos City	190,785,966	493,277	0	0
Region III	Munoz City	150,815,690	0	54,000,000	0
Region III	Olongapo City	268,713,266	16,000,000	72,000,000	0
Region III	Palayan City	112,772,000	281,000	0	0
Region III	San Fernando City	221,431,536	0	0	0
Region III	San Jose City	189,531,504	0	45,745,485	0
Region III	San Jose del Monte City	286,404,000	0	0	0
Region III	Tarlac City	325,869,435	362,500	0	0

**STATEMENT OF INCOME AND EXPENDITURES
BY CITIES CY 2004
(P 0.00)**

Region	CITY	EXPENDITURES					
		Total Expenditures	General Public Services	Education, Culture & Sports/ Manpower Development	Health, Nutrition & Population Control	Labor and Employment	Housing and Community Development
	Grand Total	64,868,575,491	23,790,298,165	6,709,829,618	5,168,957,718	25,500,453	2,330,115,339
NCR	Regional Total	28,500,531,907	10,039,391,647	4,435,554,682	2,454,977,013	10,603,912	1,608,566,299
NCR	Kalookan City	1,456,825,964	408,942,282	170,647,637	93,816,167	0	295,971,668
NCR	Las Piñas City	1,011,286,870	298,018,710	155,007,630	90,210,110	677,630	98,384,710
NCR	Makati City	3,665,610,849	1,473,751,489	998,124,434	300,119,389	0	0
NCR	Malabon City	478,682,339	192,138,911	66,130,077	53,568,044	1,147,353	25,211,760
NCR	Mandaluyong City	1,422,370,155	430,520,767	196,678,699	177,837,318	1,280,222	141,789,980
NCR	Manila City	5,842,872,811	1,020,974,926	675,118,376	762,544,014	0	749,387,709
NCR	Marikina City	778,312,420	266,767,450	51,210,950	41,718,580	1,176,150	13,800,050
NCR	Muntinlupa City	1,078,917,375	341,644,683	168,108,348	61,426,374	5,304,286	2,385,378
NCR	Parañaque City	1,494,172,400	489,911,880	296,113,370	128,806,640	0	260,099,680
NCR	Pasay City	938,786,000	229,871,000	263,987,000	98,926,000	771,000	819,000
NCR	Pasig City	2,897,677,928	845,612,086	421,244,503	204,138,554	0	2,302,462
NCR	Quezon City	6,492,774,120	3,722,319,350	787,634,170	377,857,220	247,270	12,823,950
NCR	Valenzuela City	942,242,677	318,918,113	185,549,489	64,008,602	0	5,589,952
Region I	Regional Total	1,768,887,958	624,982,231	95,392,460	97,657,635	0	32,016,918
Region I	Alaminos City	176,134,067	100,785,351	2,933,211	6,272,733	0	0
Region I	Candon City	138,121,981	43,297,810	2,789,276	7,856,857	0	0
Region I	Dagupan City	284,779,144	96,632,950	11,831,658	9,536,726	0	17,092,129
Region I	Laoag City	268,466,040	84,341,429	9,201,027	22,642,542	0	0
Region I	San Carlos City	256,663,471	80,757,044	3,866,692	21,194,148	0	0
Region I	San Fernando City	232,801,674	105,245,043	10,722,519	14,163,272	0	0
Region I	Urduyeta City	267,818,354	55,097,462	49,715,399	6,885,770	0	0
Region I	Vigan City	144,103,228	58,825,142	4,332,678	9,105,586	0	14,924,789
Region II	Regional Total	1,019,312,248	532,134,299	26,215,731	74,179,514	0	2,372,321
Region II	Cauayan City	247,099,529	153,457,391	7,360,094	24,281,453	0	2,372,321
Region II	Santiago City	462,199,719	182,576,909	7,131,636	20,012,061	0	0
Region II	Tuguegarao City	310,013,000	196,100,000	11,724,000	29,886,000	0	0
Region III	Regional Total	4,547,663,445	1,454,633,936	211,989,833	355,563,213	1,816,207	76,399,473
Region III	Angeles City	583,519,762	149,888,452	40,391,607	80,188,751	1,816,207	17,012,018
Region III	Balanga City	189,476,000	101,170,000	10,240,000	13,650,000	0	0
Region III	Cabanatuan City	450,874,913	109,190,752	22,936,859	73,037,392	0	0
Region III	Gapan City	243,483,167	44,909,643	3,858,985	8,686,545	0	0
Region III	Malolos City	281,333,443	118,291,922	21,759,653	31,196,413	0	0
Region III	Munoz City	208,511,417	61,423,010	1,879,037	5,674,417	0	32,222,022
Region III	Olongapo City	1,112,580,374	336,822,825	18,143,186	19,832,997	0	0
Region III	Palayan City	114,348,000	57,817,000	929,000	8,838,000	0	0
Region III	San Fernando City	390,692,886	153,756,889	28,067,301	18,865,690	0	4,457,433
Region III	San Jose City	266,891,753	91,357,858	8,575,808	19,507,798	0	0
Region III	San Jose del Monte City	308,112,000	85,848,000	34,108,000	44,476,000	0	22,708,000
Region III	Tarlac City	397,839,731	144,157,586	21,100,396	31,609,208	0	0

**STATEMENT OF INCOME AND EXPENDITURES
BY CITIES CY 2004
(P 0.00)**

Region	CITY	EXPENDITURES				Excess (deficit) of Income over Expenditures
		Social Security /Social Services & Welfare	Economic Services	Debt Service	Other Purposes	
	Grand Total	1,456,494,463	11,445,678,739	2,291,160,093	11,650,540,903	9,278,988,196
NCR	Regional Total	361,573,828	4,161,957,378	519,758,591	4,908,148,558	4,515,127,841
NCR	Kalookan City	18,887,363	99,847,683	0	368,713,163	224,402,337
NCR	Las Piñas City	27,529,310	160,652,430	0	180,806,340	87,577,700
NCR	Makati City	21,994,527	588,493,134	0	283,127,875	2,581,641,909
NCR	Malabon City	6,930,555	20,640,592	0	112,915,047	29,283,964
NCR	Mandaluyong City	12,372,604	220,258,790	83,352,229	158,279,546	178,984,901
NCR	Manila City	116,555,592	737,983,062	142,523,288	1,637,785,844	186,578,271
NCR	Marikina City	5,821,510	287,319,420	72,907,990	37,590,320	344,706,920
NCR	Muntinlupa City	8,253,812	136,355,493	0	355,439,001	171,630,551
NCR	Parañaque City	18,602,560	130,358,770	0	170,279,500	95,892,900
NCR	Pasay City	17,924,000	235,859,000	27,882,000	62,747,000	307,812,000
NCR	Pasig City	3,339,895	1,015,457,261	19,839,334	385,743,833	72,171,291
NCR	Quezon City	93,472,430	292,130,150	173,253,750	1,033,035,830	3,508,090
NCR	Valenzuela City	9,889,669	236,601,593	0	121,685,259	230,937,009
Region I	Regional Total	50,420,450	368,034,680	83,899,938	416,483,649	141,677,099
Region I	Alaminos City	2,184,487	20,669,797	0	43,288,488	10,014,351
Region I	Candon City	11,603,721	18,348,797	0	54,225,520	18,633,600
Region I	Dagupan City	5,349,447	20,379,449	0	123,956,786	21,587,570
Region I	Laoag City	10,149,985	76,477,483	21,461,538	44,192,036	1,754,867
Region I	San Carlos City	3,961,629	61,730,705	12,984,008	72,169,244	24,082,082
Region I	San Fernando City	4,708,493	50,540,691	5,901,778	41,519,878	29,552,008
Region I	Urdueta City	3,283,830	88,408,224	33,448,080	30,979,589	29,942,265
Region I	Vigan City	9,178,859	31,479,534	10,104,533	6,152,108	6,110,354
Region II	Regional Total	15,870,612	110,182,556	4,268,000	254,089,214	31,971,981
Region II	Cauayan City	4,406,931	16,068,580	0	39,152,759	30,874,063
Region II	Santiago City	6,049,682	72,408,976	0	174,020,456	33,999,919
Region II	Tuguegarao City	5,414,000	21,705,000	4,268,000	40,916,000	-32,902,000
Region III	Regional Total	249,522,811	1,321,234,957	197,865,755	678,637,261	38,379,109
Region III	Angeles City	8,316,165	165,433,074	17,883,239	102,590,249	-49,548,362
Region III	Balanga City	5,491,000	22,409,000	0	36,516,000	820,000
Region III	Cabanatuan City	5,466,205	110,589,917	24,655,452	104,998,336	-111,269,597
Region III	Gapan City	3,250,512	32,589,579	31,283	150,156,618	-53,584,192
Region III	Malolos City	5,898,074	62,773,381	3,014,000	38,400,000	50,426,883
Region III	Munoz City	788,023	36,414,787	70,110,121	0	14,710,406
Region III	Olongapo City	181,512,908	543,455,564	12,812,894	0	5,883,474
Region III	Palayan City	5,767,000	14,799,000	12,584,000	13,614,000	2,994,000
Region III	San Fernando City	8,045,730	91,934,754	0	85,565,088	20,051,838
Region III	San Jose City	6,365,852	57,888,885	27,411,512	55,784,041	27,785,745
Region III	San Jose del Monte City	10,588,000	86,140,000	0	24,244,000	68,809,000
Region III	Tarlac City	8,033,341	96,807,016	29,363,254	66,768,930	61,299,913

**STATEMENT OF INCOME AND EXPENDITURES
BY CITIES CY 2004
(P 0.00)**

Region	CITY	INCOME					
		Total Income	LOCAL SOURCES				
			Local Sources	Tax Revenue	TAX REVENUE		
				Real Property Tax	Business Tax	Other Taxes	
Region IV-A	Regional Total	6,348,191,144	3,008,440,912	2,549,477,136	1,644,331,349	784,085,076	121,060,711
Region IV-A	Antipolo City	1,143,787,328	314,803,854	288,948,065	218,427,275	51,750,440	18,770,350
Region IV-A	Batangas City	885,532,395	593,025,222	506,351,467	313,907,990	180,196,507	12,246,969
Region IV-A	Calamba City	921,272,904	528,704,826	507,312,588	358,506,033	115,834,836	32,971,719
Region IV-A	Cavite City	189,582,518	56,908,994	37,158,234	17,315,136	17,729,951	2,113,147
Region IV-A	Lipa City	507,472,241	231,009,813	188,378,333	107,187,663	67,535,354	13,655,316
Region IV-A	Lucena City	471,049,457	149,190,790	127,340,224	64,500,910	56,233,910	6,605,404
Region IV-A	San Pablo City	401,642,594	148,845,431	89,659,135	38,786,628	45,103,319	5,769,187
Region IV-A	Sta. Rosa City	787,335,015	338,661,349	287,290,940	98,372,133	185,597,412	3,321,395
Region IV-A	Tagaytay City	463,484,081	340,053,430	280,709,966	251,626,968	13,532,698	15,550,299
Region IV-A	Tanauan City	402,527,822	236,010,252	176,958,670	139,775,761	32,656,426	4,526,483
Region IV-A	Trece Martires City	174,504,788	71,226,950	59,369,515	35,924,852	17,914,221	5,530,442
Region IV-B	Regional Total	1,099,140,403	134,858,775	101,205,550	44,796,416	45,571,047	10,838,087
Region IV-B	Calapan City	267,294,324	37,267,488	23,052,867	8,848,537	11,736,423	2,467,907
Region IV-B	Puerto Princesa City	831,846,079	97,591,287	78,152,683	35,947,879	33,834,624	8,370,180
Region V	Regional Total	1,696,070,396	399,952,280	271,330,716	124,480,861	125,955,468	20,894,388
Region V	Iriga City	185,057,081	24,004,144	14,464,098	5,471,305	7,012,540	1,980,254
Region V	Legaspi City	336,643,036	113,719,164	90,672,085	42,188,457	42,615,341	5,868,287
Region V	Ligao City	203,409,026	18,277,314	8,024,885	3,418,485	3,440,099	1,166,301
Region V	Masbate City	185,229,251	23,887,413	15,745,536	7,808,658	5,866,146	2,070,732
Region V	Naga City	346,963,050	168,703,678	106,593,778	48,073,882	50,979,578	7,540,317
Region V	Sorsogon City	255,535,112	25,086,972	17,587,973	6,555,705	9,989,094	1,043,174
Region V	Tabaco City	183,233,840	26,273,594	18,242,360	10,964,368	6,052,670	1,225,322
Region VI	Regional Total	5,139,412,920	1,495,963,070	1,134,700,950	645,108,650	391,893,620	97,698,680
Region VI	Bacolod City	680,163,900	309,801,600	257,564,120	120,475,640	109,872,230	27,216,250
Region VI	Bago City	317,880,000	66,764,000	48,009,000	39,207,000	672,000	8,130,000
Region VI	Cadiz City	329,157,970	35,120,760	27,773,050	21,983,740	4,636,260	1,153,050
Region VI	Escalante City	200,834,940	26,151,530	19,937,010	17,145,950	2,403,660	387,400
Region VI	Himamaylan City	228,095,560	15,029,740	11,235,300	9,032,360	1,522,330	680,610
Region VI	Iloilo City	792,518,720	482,817,850	416,535,880	191,847,370	189,503,260	35,185,250
Region VI	Kabankalan City	382,993,130	42,470,130	19,155,470	10,403,100	7,122,350	1,630,020
Region VI	La Carlota City	199,294,330	63,393,390	58,958,710	43,676,290	7,793,710	7,488,710
Region VI	Passi City	228,308,780	52,534,450	18,175,420	10,595,800	4,024,430	3,555,190
Region VI	Roxas City	247,702,450	79,019,510	53,241,680	22,968,980	27,087,360	3,185,340
Region VI	Sagay City	323,185,260	55,895,020	31,828,150	23,927,780	6,611,320	1,289,050
Region VI	San Carlos (Negros Occ.) City	326,924,180	96,118,270	35,744,300	27,130,150	6,285,190	2,328,960
Region VI	Silay City	243,019,690	57,273,010	47,625,100	38,421,770	7,428,050	1,775,280
Region VI	Sipalay City	205,634,000	6,398,830	4,256,350	2,913,880	979,880	362,590
Region VI	Talisay City (Negros Occ),	204,276,660	37,325,430	33,159,120	25,718,900	4,893,650	2,546,570
Region VI	Victorias City	229,423,350	69,849,550	51,502,290	39,659,940	11,057,940	784,410

**STATEMENT OF INCOME AND EXPENDITURES
BY CITIES CY 2004
(P 0.00)**

Region	CITY	I N C O M E					
		LOCAL SOURCES					
		Non-Tax Revenue	NON-TAX REVENUE				
Regulatory Fees	Service/User Charges		Receipts from Economic Enterprise	Toll Fees	Other Receipts		
Region IV-A	Regional Total	458,963,776	109,743,412	80,067,899	247,543,266	0	21,609,199
Region IV-A	Antipolo City	25,855,789	12,774,390	5,141,583	7,939,816	0	0
Region IV-A	Batangas City	86,673,755	18,922,417	30,824,024	30,303,641	0	6,623,672
Region IV-A	Calamba City	21,392,239	12,004,247	8,213,412	1,174,580	0	0
Region IV-A	Cavite City	19,750,760	4,937,197	1,531,488	13,282,075	0	0
Region IV-A	Lipa City	42,631,480	7,133,606	4,443,311	26,808,385	0	4,246,177
Region IV-A	Lucena City	21,850,566	7,627,862	6,283,912	5,378,677	0	2,560,115
Region IV-A	San Pablo City	59,186,297	7,705,542	5,290,200	43,295,469	0	2,895,086
Region IV-A	Sta. Rosa City	51,370,409	21,625,028	5,576,451	23,790,713	0	378,217
Region IV-A	Tagaytay City	59,343,464	10,532,829	3,813,492	43,810,009	0	1,187,134
Region IV-A	Tanauan City	59,051,582	4,197,301	5,199,723	47,878,671	0	1,775,887
Region IV-A	Trece Martires City	11,857,435	2,282,992	3,750,302	3,881,229	0	1,942,911
Region IV-B	Regional Total	33,653,226	8,237,356	6,057,778	14,394,374	0	4,963,718
Region IV-B	Calapan City	14,214,622	3,475,783	2,323,244	3,451,877	0	4,963,718
Region IV-B	Puerto Princesa City	19,438,604	4,761,573	3,734,534	10,942,497	0	0
Region V	Regional Total	128,621,563	25,605,541	14,945,330	64,986,677	0	23,084,015
Region V	Iriga City	9,540,046	1,845,155	1,493,946	5,918,024	0	282,921
Region V	Legaspi City	23,047,079	3,612,772	2,982,812	11,490,707	0	4,960,788
Region V	Ligao City	10,252,429	1,088,896	1,194,215	4,740,618	0	3,228,700
Region V	Masbate City	8,141,877	3,028,983	673,274	3,817,632	0	621,988
Region V	Naga City	62,109,900	10,739,255	6,029,778	32,580,396	0	12,760,470
Region V	Sorsogon City	7,498,999	2,839,557	800,406	3,270,428	0	588,608
Region V	Tabaco City	8,031,234	2,450,924	1,770,900	3,168,871	0	640,540
Region VI	Regional Total	361,262,120	50,802,190	62,123,160	168,541,310	590,780	79,204,680
Region VI	Bacolod City	52,237,480	11,199,080	23,883,120	10,118,400	0	7,036,880
Region VI	Bago City	18,755,000	2,426,000	9,968,000	3,283,000	0	3,078,000
Region VI	Cadiz City	7,347,710	1,558,050	1,410,420	3,776,300	0	602,940
Region VI	Escalante City	6,214,520	521,650	1,494,530	4,198,340	0	0
Region VI	Himamaylan City	3,794,440	864,390	252,940	1,156,430	0	1,520,680
Region VI	Iloilo City	66,281,970	15,485,840	7,022,510	38,318,650	587,500	4,867,470
Region VI	Kabankalan City	23,314,660	2,587,780	1,513,490	8,895,040	0	10,318,350
Region VI	La Carlota City	4,434,680	614,660	344,860	2,455,980	0	1,019,180
Region VI	Passi City	34,359,030	1,059,850	2,002,410	19,249,620	0	12,047,150
Region VI	Roxas City	25,777,830	3,752,630	1,497,080	15,019,730	0	5,508,390
Region VI	Sagay City	24,066,870	2,282,160	7,358,120	8,248,320	0	6,178,270
Region VI	San Carlos (Negros Occ.) City	60,373,970	663,630	1,448,670	40,102,470	0	18,159,200
Region VI	Silay City	9,647,910	2,834,180	956,430	2,353,490	0	3,503,810
Region VI	Sipalay City	2,142,480	639,980	230,120	1,253,770	3,280	15,330
Region VI	Talisay City (Negros Occ.)	4,166,310	1,341,730	577,840	2,018,560	0	228,180
Region VI	Victorias City	18,347,260	2,970,580	2,162,620	8,093,210	0	5,120,850

**STATEMENT OF INCOME AND EXPENDITURES
BY CITIES CY 2004
(P 0.00)**

Region	CITY	I N C O M E			
		Shares from National Tax Collections	Extraordinary Receipts/Aids	Loans & Borrowings	Inter-Local Transfers
Region IV-A	Regional Total	2,570,081,166	15,921,089	745,548,405	8,199,571
Region IV-A	Antipolo City	428,122,292	861,182	400,000,000	0
Region IV-A	Batangas City	292,507,173	0	0	0
Region IV-A	Calamba City	339,208,042	3,360,036	50,000,000	0
Region IV-A	Cavite City	132,499,336	174,188	0	0
Region IV-A	Lipa City	260,462,428	0	16,000,000	0
Region IV-A	Lucena City	215,402,426	1,050,436	105,405,806	0
Region IV-A	San Pablo City	251,273,298	458,002	0	1,065,863
Region IV-A	Sta. Rosa City	285,764,253	755,193	162,154,220	0
Region IV-A	Tagaytay City	95,108,564	9,200,000	11,988,379	7,133,709
Region IV-A	Tanauan City	166,517,570	0	0	0
Region IV-A	Trece Martires City	103,215,785	62,053	0	0
Region IV-B	Regional Total	929,916,808	270,701	34,094,119	0
Region IV-B	Calapan City	195,662,016	270,701	34,094,119	0
Region IV-B	Puerto Princesa City	734,254,792	0	0	0
Region V	Regional Total	1,269,498,160	6,619,956	20,000,000	0
Region V	Iriga City	157,588,218	3,464,719	0	0
Region V	Legaspi City	202,641,527	282,345	20,000,000	0
Region V	Ligao City	185,083,817	47,895	0	0
Region V	Masbate City	159,006,812	2,335,026	0	0
Region V	Naga City	177,899,371	360,001	0	0
Region V	Sorsogon City	230,318,169	129,971	0	0
Region V	Tabaco City	156,960,246	0	0	0
Region VI	Regional Total	3,567,883,820	56,566,000	19,000,030	0
Region VI	Bacolod City	370,362,300	0	0	0
Region VI	Bago City	251,116,000	0	0	0
Region VI	Cadiz City	281,896,620	12,140,590	0	0
Region VI	Escalante City	164,290,360	10,393,050	0	0
Region VI	Himamaylan City	213,026,570	39,250	0	0
Region VI	Iloilo City	309,700,870	0	0	0
Region VI	Kabankalan City	329,610,990	10,912,010	0	0
Region VI	La Carlota City	135,900,940	0	0	0
Region VI	Passi City	172,794,300	0	2,980,030	0
Region VI	Roxas City	168,682,940	0	0	0
Region VI	Sagay City	236,253,690	22,816,550	8,220,000	0
Region VI	San Carlos (Negros Occ.) City	230,805,910	0	0	0
Region VI	Silay City	185,645,040	101,640	0	0
Region VI	Sipalay City	199,235,170	0	0	0
Region VI	Talisay City (Negros Occ),	166,914,210	37,020	0	0
Region VI	Victorias City	151,647,910	125,890	7,800,000	0

**STATEMENT OF INCOME AND EXPENDITURES
BY CITIES CY 2004
(P 0.00)**

Region	CITY	EXPENDITURES					
		Total Expenditures	General Public Services	Education, Culture & Sports/ Manpower Development	Health, Nutrition & Population Control	Labor and Employment	Housing and Community Development
Region IV-A	Regional Total	5,281,735,327	1,927,658,858	643,002,867	370,596,622	0	193,696,710
Region IV-A	Antipolo City	681,950,644	242,480,204	132,916,058	38,345,274	0	107,279,561
Region IV-A	Batangas City	736,795,813	219,797,761	84,978,560	69,696,894	0	63,486,640
Region IV-A	Calamba City	749,808,136	256,422,768	106,928,822	33,944,191	0	0
Region IV-A	Cavite City	179,786,347	57,573,204	3,987,907	15,562,507	0	0
Region IV-A	Lipa City	484,057,529	199,915,396	75,115,791	47,508,958	0	0
Region IV-A	Lucena City	424,989,019	168,901,283	26,243,307	25,631,104	0	2,924,822
Region IV-A	San Pablo City	345,837,268	122,989,952	32,764,616	26,854,132	0	0
Region IV-A	Sta. Rosa City	784,135,232	217,915,252	53,235,474	73,349,543	0	388,715
Region IV-A	Tagaytay City	398,227,576	216,207,253	69,264,909	8,913,394	0	12,361,034
Region IV-A	Tanauan City	315,190,568	111,231,395	33,713,335	19,986,663	0	7,255,939
Region IV-A	Trece Martires City	180,957,196	114,224,390	23,854,088	10,803,963	0	0
Region IV-B	Regional Total	1,064,316,927	297,158,250	31,984,599	50,288,000	0	0
Region IV-B	Calapan City	166,418,264	64,582,583	11,659,167	7,753,105	0	0
Region IV-B	Puerto Princesa City	897,898,663	232,575,667	20,325,432	42,534,895	0	0
Region V	Regional Total	1,667,539,077	656,265,065	63,438,268	111,322,688	7,295,058	6,115,178
Region V	Iriga City	180,521,058	65,517,703	2,621,049	6,782,550	0	0
Region V	Legaspi City	308,901,240	185,299,142	14,434,289	21,196,656	0	638,124
Region V	Ligao City	127,658,864	36,682,025	14,531,291	6,329,564	397,381	2,316,444
Region V	Masbate City	180,917,606	64,392,231	3,818,902	11,890,178	0	0
Region V	Naga City	325,103,896	100,172,389	23,531,260	31,432,193	6,897,677	3,160,610
Region V	Sorsogon City	279,608,227	83,955,638	2,664,384	24,444,845	0	0
Region V	Tabaco City	264,828,186	120,245,937	1,837,093	9,246,702	0	0
Region VI	Regional Total	4,532,279,940	1,750,399,150	320,770,910	414,989,230	688,270	99,079,970
Region VI	Bacolod City	589,062,250	230,079,870	64,882,970	45,764,370	0	51,339,110
Region VI	Bago City	288,635,000	115,441,000	29,953,000	50,459,000	0	0
Region VI	Cadiz City	284,332,810	131,275,480	8,439,360	25,153,220	0	497,540
Region VI	Escalante City	169,623,460	149,824,480	4,292,660	7,273,650	0	0
Region VI	Himamaylan City	159,595,000	62,388,600	2,902,290	10,018,200	0	1,242,370
Region VI	Iloilo City	722,204,630	234,226,620	86,325,790	55,848,810	0	33,235,190
Region VI	Kabankalan City	236,040,690	84,573,690	18,178,830	25,284,230	668,490	1,186,470
Region VI	La Carlota City	192,253,010	93,767,500	20,728,760	12,783,550	19,780	398,370
Region VI	Passi City	218,790,520	64,996,970	5,586,480	13,041,710	0	3,449,950
Region VI	Roxas City	214,740,940	105,696,110	5,520,410	27,626,170	0	128,850
Region VI	Sagay City	291,702,770	77,952,760	11,397,340	34,285,820	0	0
Region VI	San Carlos (Negros Occ.) City	297,321,030	102,475,180	16,210,700	54,043,570	0	7,602,120
Region VI	Silay City	274,303,850	114,014,860	20,695,860	13,936,990	0	0
Region VI	Sipalay City	211,533,410	49,233,930	1,466,370	19,113,950	0	0
Region VI	Talisay City (Negros Occ),	183,882,020	75,708,890	4,825,900	12,100,350	0	0
Region VI	Victorias City	198,258,550	58,743,210	19,364,190	8,255,640	0	0

**STATEMENT OF INCOME AND EXPENDITURES
BY CITIES CY 2004
(P 0.00)**

Region	CITY	EXPENDITURES				Excess (deficit) of Income over Expenditures
		Social Security /Social Services & Welfare	Economic Services	Debt Service	Other Purposes	
Region IV-A	Regional Total	100,888,063	1,212,929,629	379,972,089	452,990,490	1,066,455,817
Region IV-A	Antipolo City	7,715,974	47,831,503	52,051,297	53,330,773	461,836,685
Region IV-A	Batangas City	25,027,854	205,319,980	9,041,366	59,446,759	148,736,583
Region IV-A	Calamba City	15,267,874	249,406,896	50,000,000	37,837,585	171,464,768
Region IV-A	Cavite City	9,442,774	28,836,173	19,087,116	45,296,665	9,796,171
Region IV-A	Lipa City	9,283,805	63,487,909	31,300,549	57,445,121	23,414,713
Region IV-A	Lucena City	8,401,896	48,326,488	91,750,103	52,810,017	46,060,438
Region IV-A	San Pablo City	4,721,355	68,121,153	14,188,804	76,197,257	55,805,326
Region IV-A	Sta. Rosa City	7,060,821	331,113,645	94,259,237	6,812,545	3,199,782
Region IV-A	Tagaytay City	3,344,439	65,945,451	0	22,191,096	65,256,505
Region IV-A	Tanauan City	7,380,818	87,104,752	18,293,617	30,224,050	87,337,254
Region IV-A	Trece Martires City	3,240,455	17,435,679	0	11,398,622	-6,452,408
Region IV-B	Regional Total	8,615,381	288,056,731	9,976,648	378,237,318	34,823,476
Region IV-B	Calapan City	2,532,319	33,610,269	9,976,648	36,304,173	100,876,060
Region IV-B	Puerto Princesa City	6,083,062	254,446,462	0	341,933,145	-66,052,584
Region V	Regional Total	54,773,916	292,934,533	65,352,566	410,041,805	28,531,319
Region V	Iriga City	3,418,314	37,203,341	1,581,851	63,396,249	4,536,023
Region V	Legaspi City	11,125,724	45,877,990	9,253,386	21,075,930	27,741,796
Region V	Ligao City	1,791,630	15,879,984	3,339,258	46,391,285	75,750,162
Region V	Masbate City	3,885,329	35,243,809	23,818,800	37,868,357	4,311,645
Region V	Naga City	30,450,406	83,654,603	26,383,108	19,421,652	21,859,154
Region V	Sorsogon City	3,180,368	60,273,222	976,162	104,113,607	-24,073,115
Region V	Tabaco City	922,144	14,801,584	0	117,774,725	-81,594,347
Region VI	Regional Total	174,035,190	636,542,670	103,297,500	1,032,477,050	607,132,980
Region VI	Bacolod City	41,834,020	77,447,490	0	77,714,420	91,101,650
Region VI	Bago City	4,019,000	53,249,000	0	35,514,000	29,245,000
Region VI	Cadiz City	8,255,040	31,120,920	9,394,420	70,196,830	44,825,160
Region VI	Escalante City	2,242,910	5,989,760	0	0	31,211,480
Region VI	Himamaylan City	4,753,490	6,811,530	0	71,478,520	68,500,560
Region VI	Iloilo City	52,241,810	103,211,100	30,271,390	126,843,920	70,314,090
Region VI	Kabankalan City	21,636,390	44,548,700	2,173,300	37,790,590	146,952,440
Region VI	La Carlota City	4,300,060	17,994,690	0	42,260,300	7,041,320
Region VI	Passi City	4,166,800	53,311,670	35,526,270	38,710,670	9,518,260
Region VI	Roxas City	5,037,320	44,286,960	0	26,445,120	32,961,510
Region VI	Sagay City	5,223,300	27,847,780	0	134,995,770	31,482,490
Region VI	San Carlos (Negros Occ.) City	5,996,090	60,153,770	0	50,839,600	29,603,150
Region VI	Silay City	2,817,970	57,036,060	3,020,810	62,781,300	-31,284,160
Region VI	Sipalay City	4,008,700	24,241,550	14,911,310	98,557,600	-5,899,410
Region VI	Talisay City (Negros Occ),	3,251,680	15,071,870	0	72,923,330	20,394,640
Region VI	Victorias City	4,250,610	14,219,820	8,000,000	85,425,080	31,164,800

**STATEMENT OF INCOME AND EXPENDITURES
BY CITIES CY 2004
(P 0.00)**

Region	CITY	INCOME					
		Total Income	LOCAL SOURCES				
			Local Sources	Tax Revenue	TAX REVENUE		
Real Property Tax	Business Tax	Other Taxes					
Region VII	Regional Total	4,896,641,499	2,214,529,385	1,650,380,554	681,881,267	857,289,172	111,210,115
Region VII	Bais City	220,371,288	32,653,039	18,709,728	12,055,751	5,342,064	1,311,913
Region VII	Bayawan City	322,348,752	16,416,734	9,035,764	4,548,467	3,770,868	716,429
Region VII	Canlaon City	149,928,096	11,515,311	4,945,903	1,757,201	1,801,377	1,387,324
Region VII	Cebu City	1,652,994,616	1,042,696,639	811,929,012	330,935,756	421,736,073	59,257,182
Region VII	Danao City	215,431,411	60,857,179	33,592,718	14,818,253	16,313,005	2,461,461
Region VII	Dumaguete City	232,758,036	93,525,719	60,000,287	21,642,542	29,781,676	8,576,069
Region VII	Lapu-Lapu City	577,676,202	363,466,508	312,661,563	104,323,298	199,330,807	9,007,458
Region VII	Mandaue City	575,149,569	328,105,127	236,710,905	118,931,739	98,259,403	19,519,764
Region VII	Tagbilaran City	234,085,858	114,067,813	78,100,004	31,825,442	42,846,447	3,428,115
Region VII	Talisay City (Cebu)	238,947,427	65,974,528	49,060,193	22,484,254	22,843,253	3,732,687
Region VII	Tanjay City	197,191,027	17,252,824	10,884,198	6,047,255	4,127,056	709,886
Region VII	Toledo City	279,759,215	67,997,964	24,750,279	12,511,309	11,137,143	1,101,827
Region VIII	Regional Total	1,515,666,375	333,115,364	201,900,230	69,036,791	118,564,522	14,298,917
Region VIII	Calbayog City	420,124,087	33,298,711	19,227,421	7,530,826	9,594,638	2,101,956
Region VIII	Maasin City	244,315,574	25,802,552	12,325,529	3,949,427	7,467,398	908,704
Region VIII	Ormoc City	446,348,132	104,257,857	50,315,497	17,314,966	29,781,345	3,219,186
Region VIII	Tacloban City	404,878,582	169,756,244	120,031,784	40,241,572	71,721,141	8,069,071
Region IX	Regional Total	2,086,368,430	419,876,333	250,588,361	76,738,628	156,192,361	17,657,372
Region IX	Dapitan City	223,414,357	15,800,269	6,427,961	4,246,192	1,583,758	598,011
Region IX	Dipolog City	246,249,000	52,133,000	27,229,000	11,225,000	13,714,000	2,290,000
Region IX	Isabela City	227,054,303	10,672,954	5,970,800	2,950,286	2,448,493	572,021
Region IX	Pagadian City	311,160,770	59,598,110	33,701,600	11,438,150	19,390,110	2,873,340
Region IX	Zamboanga City	1,078,490,000	281,672,000	177,259,000	46,879,000	119,056,000	11,324,000
Region X	Regional Total	3,503,284,351	961,396,449	700,653,626	314,084,921	351,692,050	34,876,655
Region X	Cagayan de Oro City	1,134,256,526	496,323,505	411,616,514	160,805,182	231,936,719	18,874,613
Region X	Gingoog City	306,112,240	31,345,872	23,308,062	10,440,362	10,920,447	1,947,253
Region X	Iligan City	695,260,008	239,518,741	155,237,756	92,967,683	55,865,961	6,404,113
Region X	Malaybalay City	423,091,040	40,741,024	21,032,756	11,231,570	8,530,424	1,270,763
Region X	Oroquieta City	183,551,028	18,932,972	11,143,548	3,735,572	6,625,897	782,079
Region X	Ozamis City	261,512,782	78,121,487	54,726,178	23,511,430	27,852,458	3,362,289
Region X	Tangub City	157,509,942	18,228,805	3,976,728	2,166,895	1,446,795	363,039
Region X	Valencia City	341,990,785	38,184,043	19,612,083	9,226,228	8,513,350	1,872,505
Region XI	Regional Total	3,386,620,922	1,138,160,420	840,112,583	333,201,419	434,336,549	72,574,615
Region XI	Davao City	2,222,330,947	826,839,979	664,390,286	249,257,041	354,711,176	60,422,069
Region XI	Digos City	284,697,778	67,040,891	29,122,464	10,384,010	16,060,338	2,678,116
Region XI	Island Garden City of Samal	217,387,523	22,141,736	12,628,623	8,711,392	3,107,912	809,320
Region XI	Panabo City	280,125,703	67,532,419	45,508,110	19,997,863	22,974,798	2,535,449
Region XI	Tagum City	382,078,970	154,605,395	88,463,100	44,851,113	37,482,326	6,129,660
Region XII	Regional Total	1,937,085,937	470,117,258	314,253,807	143,504,689	148,166,380	22,582,738
Region XII	Cotabato City	270,465,296	58,024,062	38,592,697	14,660,159	20,035,095	3,897,443
Region XII	General Santos City	708,630,459	261,298,549	174,952,268	82,854,337	80,670,666	11,427,265
Region XII	Kidapawan City	281,137,281	46,860,077	30,538,167	13,860,633	14,223,305	2,454,229
Region XII	Koronadal City	262,792,354	41,420,049	29,309,499	10,275,275	16,285,403	2,748,821
Region XII	Marawi City	214,169,330	17,347,335	15,590,782	7,020,544	8,449,179	121,059
Region XII	Tacurong City	199,891,217	45,167,186	25,270,393	14,833,740	8,502,732	1,933,921
CAR	Baguio City	763,884,091	412,513,060	273,909,532	112,672,035	138,193,666	23,043,830
CARAGA	Regional Total	1,211,645,632	312,374,601	175,556,531	76,316,014	90,775,094	8,465,423
CARAGA	Bislig City	260,209,540	49,461,194	33,229,898	22,556,562	9,911,074	762,263
CARAGA	Butuan City	665,234,865	189,110,798	106,068,587	36,473,790	63,706,214	5,888,582
CARAGA	Surigao City	286,201,227	73,802,609	36,258,047	17,285,662	17,157,807	1,814,578

**STATEMENT OF INCOME AND EXPENDITURES
BY CITIES CY 2004**
(P 0.00)

Region	CITY	INCOME					
		LOCAL SOURCES					
		NON-TAX REVENUE					
		Non-Tax Revenue	Regulatory Fees	Service/User Charges	Receipts from Econ .Ent.	Toll Fees	Other Receipts
Region VII	Regional Total	564,148,831	131,117,107	91,109,389	204,951,921	16,277	136,954,136
Region VII	Bais City	13,943,312	1,986,106	318,336	5,499,439	16,277	6,123,154
Region VII	Bayawan City	7,380,970	839,085	1,732,412	4,222,119	0	587,353
Region VII	Canlaon City	6,569,408	896,745	193,199	4,388,979	0	1,090,485
Region VII	Cebu City	230,767,627	65,084,597	62,452,859	39,414,099	0	63,816,072
Region VII	Danao City	27,264,460	4,106,703	1,132,025	18,406,537	0	3,619,195
Region VII	Dumaguete City	33,525,431	14,841,299	1,852,915	16,812,716	0	18,502
Region VII	Lapu-Lapu City	50,804,945	12,565,691	6,613,026	9,570,014	0	22,056,214
Region VII	Mandaue City	91,394,222	18,687,237	9,414,009	41,424,230	0	21,868,746
Region VII	Tagbilaran City	35,967,809	6,255,591	3,652,464	24,467,601	0	1,592,154
Region VII	Talisay City (Cebu)	16,914,335	2,245,367	1,010,019	9,932,760	0	3,726,189
Region VII	Tanjay City	6,368,627	1,342,981	983,718	1,156,683	0	2,885,245
Region VII	Toledo City	43,247,685	2,265,706	1,754,408	29,656,742	0	9,570,829
Region VIII	Regional Total	131,215,134	29,182,177	9,450,718	69,782,338	645,933	22,153,969
Region VIII	Calbayog City	14,071,290	3,509,815	3,313,924	6,423,059	645,933	178,560
Region VIII	Maasin City	13,477,023	3,166,801	1,175,379	7,488,518	0	1,646,324
Region VIII	Ormoc City	53,942,360	4,670,286	1,617,927	39,716,190	0	7,937,956
Region VIII	Tacloban City	49,724,460	17,835,275	3,343,487	16,154,571	0	12,391,128
Region IX	Regional Total	169,287,972	31,388,815	14,888,912	57,843,429	0	65,166,816
Region IX	Dapitan City	9,372,309	973,475	561,559	6,745,266	0	1,092,008
Region IX	Dipolog City	24,904,000	5,637,000	1,493,000	15,875,000	0	1,899,000
Region IX	Isabela City	4,702,154	1,295,990	975,533	2,114,503	0	316,128
Region IX	Pagadian City	25,896,510	7,805,350	2,360,820	11,613,660	0	4,116,680
Region IX	Zamboanga City	104,413,000	15,677,000	9,498,000	21,495,000	0	57,743,000
Region X	Regional Total	260,742,823	39,490,947	31,436,177	156,687,063	0	33,128,636
Region X	Cagayan de Oro City	84,706,991	17,428,578	20,058,477	44,577,331	0	2,642,604
Region X	Gingoog City	8,037,810	760,504	1,143,127	5,340,359	0	793,820
Region X	Iligan City	84,280,985	9,766,545	3,070,505	54,549,157	0	16,894,778
Region X	Malaybalay City	19,708,267	1,985,031	1,230,479	7,661,135	0	8,831,622
Region X	Oroquieta City	7,789,424	1,083,927	1,467,746	3,782,809	0	1,454,942
Region X	Ozamis City	23,395,309	3,531,960	2,877,703	15,369,657	0	1,615,990
Region X	Tangub City	14,252,077	486,838	823,333	12,187,348	0	754,558
Region X	Valencia City	18,571,960	4,447,564	764,807	13,219,268	0	140,321
Region XI	Regional Total	298,047,837	69,887,376	66,223,251	123,978,633	3,379,252	34,579,326
Region XI	Davao City	162,449,693	47,804,134	49,109,942	38,904,881	2,970,522	23,660,213
Region XI	Digos City	37,918,427	5,444,738	2,537,015	25,727,860	0	4,208,814
Region XI	Island Garden City of Samal	9,513,113	1,798,627	1,575,983	3,122,600	408,730	2,607,173
Region XI	Panabo City	22,024,309	7,812,220	2,192,419	11,502,110	0	517,562
Region XI	Tagum City	66,142,295	7,027,657	10,807,892	44,721,182	0	3,585,564
Region XII	Regional Total	155,863,451	32,526,059	15,674,788	60,934,395	0	46,728,209
Region XII	Cotabato City	19,431,365	3,858,256	2,599,038	12,206,999	0	767,072
Region XII	General Santos City	86,346,281	17,803,680	9,040,668	16,939,826	0	42,562,107
Region XII	Kidapawan City	16,321,909	3,237,067	1,418,011	11,576,815	0	90,016
Region XII	Koronadal City	12,110,550	2,903,853	1,337,240	7,275,337	0	594,120
Region XII	Marawi City	1,756,552	1,756,552	0	0	0	0
Region XII	Tacurong City	19,896,794	2,966,649	1,279,831	12,935,418	0	2,714,895
CAR	Baguio City	138,603,528	15,335,383	34,333,075	53,043,361	0	35,891,709
CARAGA	Regional Total	136,818,069	18,197,238	32,075,416	61,455,915	94,782	24,994,718
CARAGA	Bislig City	16,231,296	1,490,635	1,003,115	9,156,261	0	4,581,285
CARAGA	Butuan City	83,042,212	9,573,475	26,274,086	27,836,998	0	19,357,652
CARAGA	Surigao City	37,544,562	7,133,128	4,798,215	24,462,656	94,782	1,055,781

**STATEMENT OF INCOME AND EXPENDITURES
BY CITIES CY 2004
(P 0.00)**

Region	CITY	I N C O M E			
		Shares from National Tax Collections	Extraordinary Receipts/Aids	Loans & Borrowings	Inter-Local Transfers
Region VII	Regional Total	2,665,509,016	368,739	14,332,889	1,901,470
Region VII	Bais City	187,718,249	0	0	0
Region VII	Bayawan City	305,932,018	0	0	0
Region VII	Canlaon City	138,412,785	0	0	0
Region VII	Cebu City	610,297,977	0	0	0
Region VII	Danao City	154,397,277	176,956	0	0
Region VII	Dumaguete City	139,232,317	0	0	0
Region VII	Lapu-Lapu City	214,209,694	0	0	0
Region VII	Mandaue City	232,711,553	0	14,332,889	0
Region VII	Tagbilaran City	120,018,045	0	0	0
Region VII	Talisay City (Cebu)	171,071,429	0	0	1,901,470
Region VII	Tanjay City	179,848,704	89,499	0	0
Region VII	Toledo City	211,658,967	102,284	0	0
Region VIII	Regional Total	1,102,903,606	11,888,308	64,760,000	2,999,097
Region VIII	Calbayog City	374,825,376	0	12,000,000	0
Region VIII	Maasin City	165,492,958	260,064	52,760,000	0
Region VIII	Ormoc City	327,462,934	11,628,244	0	2,999,097
Region VIII	Tacloban City	235,122,338	0	0	0
Region IX	Regional Total	1,621,098,509	1,251,667	41,116,752	3,025,170
Region IX	Dapitan City	207,614,088	0	0	0
Region IX	Dipolog City	193,022,000	1,094,000	0	0
Region IX	Isabela City	172,081,761	157,667	41,116,752	3,025,170
Region IX	Pagadian City	251,562,660	0	0	0
Region IX	Zamboanga City	796,818,000	0	0	0
Region X	Regional Total	2,354,674,567	2,834,110	178,849,833	5,529,392
Region X	Cagayan de Oro City	458,752,608	2,330,580	176,849,833	0
Region X	Gingoog City	269,162,887	74,089	0	5,529,392
Region X	Iligan City	455,741,267	0	0	0
Region X	Malaybalay City	382,196,784	153,232	0	0
Region X	Oroquieta City	164,563,555	54,502	0	0
Region X	Ozamis City	181,178,532	212,763	2,000,000	0
Region X	Tangub City	139,272,192	8,945	0	0
Region X	Valencia City	303,806,742	0	0	0
Region XI	Regional Total	2,247,819,915	640,586	0	0
Region XI	Davao City	1,395,490,968	0	0	0
Region XI	Digos City	217,656,887	0	0	0
Region XI	Island Garden City of Samal	195,182,456	63,331	0	0
Region XI	Panabo City	212,593,284	0	0	0
Region XI	Tagum City	226,896,320	577,255	0	0
Region XII	Regional Total	1,452,832,163	1,600,016	12,536,500	0
Region XII	Cotabato City	211,615,105	826,129	0	0
Region XII	General Santos City	446,801,960	529,950	0	0
Region XII	Kidapawan City	221,740,704	0	12,536,500	0
Region XII	Koronadal City	221,128,368	243,937	0	0
Region XII	Marawi City	196,821,995	0	0	0
Region XII	Tacurong City	154,724,031	0	0	0
CAR	Baguio City	350,416,322	954,709	0	0
CARAGA	Regional Total	855,264,985	5,110,680	38,895,366	0
CARAGA	Bislig City	210,691,296	57,050	0	0
CARAGA	Butuan City	437,228,701	0	38,895,366	0
CARAGA	Surigao City	207,344,988	5,053,630	0	0

**STATEMENT OF INCOME AND EXPENDITURES
BY CITIES CY 2004**

(P 0.00)

Region	CITY	EXPENDITURES					
		Total Expenditures	General Public Services	Education, Culture & Sports/ Manpower Development	Health, Nutrition & Population Control	Labor and Employment	Housing and Community Development
Region VII	Regional Total	4,409,287,255	1,781,239,962	307,236,715	333,143,381	0	127,223,932
Region VII	Bais City	139,843,835	49,079,041	4,301,818	9,016,641	0	0
Region VII	Bayawan City	263,056,473	96,707,388	5,509,949	16,335,234	0	0
Region VII	Canlaon City	146,041,921	82,821,302	671,873	9,278,939	0	0
Region VII	Cebu City	1,692,635,591	540,930,056	121,919,896	179,021,902	0	122,405,425
Region VII	Danao City	182,508,251	69,349,059	11,226,732	10,732,473	0	0
Region VII	Dumaguete City	222,552,455	55,905,461	13,712,755	12,253,568	0	0
Region VII	Lapu-Lapu City	493,836,578	334,696,134	59,591,735	23,227,681	0	4,055,563
Region VII	Mandaue City	412,552,205	247,270,565	53,640,969	13,109,329	0	762,944
Region VII	Tagbilaran City	204,004,615	100,705,371	9,706,006	14,195,348	0	0
Region VII	Talisay City (Cebu)	235,166,389	48,770,537	11,981,385	16,322,641	0	0
Region VII	Tanjay City	185,755,348	61,046,422	6,322,109	14,810,350	0	0
Region VII	Toledo City	231,333,594	93,958,626	8,651,488	14,839,275	0	0
Region VIII	Regional Total	1,351,651,339	546,201,146	49,836,319	81,960,071	0	0
Region VIII	Calbayog City	418,502,493	200,473,456	4,068,089	27,700,367	0	0
Region VIII	Maasin City	235,570,442	40,630,360	2,583,555	9,240,397	0	0
Region VIII	Ormoc City	314,440,822	133,689,466	8,700,649	22,872,894	0	0
Region VIII	Tacloban City	383,137,582	171,407,865	34,484,026	22,146,414	0	0
Region IX	Regional Total	1,421,933,264	607,141,046	26,577,279	111,882,926	30,595	21,211,455
Region IX	Dapitan City	165,902,670	65,060,617	1,882,122	6,441,276	30,595	18,909,675
Region IX	Dipolog City	221,559,000	64,964,000	5,203,000	11,470,000	0	0
Region IX	Isabela City	226,517,674	104,932,869	1,231,107	5,746,550	0	0
Region IX	Pagadian City	260,975,920	128,157,560	910,050	26,776,100	0	2,301,780
Region IX	Zamboanga City	546,978,000	244,026,000	17,351,000	61,449,000	0	0
Region X	Regional Total	3,197,096,963	1,021,307,076	164,892,448	298,900,221	1,587,476	105,644,096
Region X	Cagayan de Oro City	1,112,171,616	300,053,339	70,853,328	119,000,301	1,577,476	61,527,008
Region X	Gingoog City	218,188,665	97,696,019	4,771,677	27,066,678	10,000	1,843,472
Region X	Iligan City	806,351,374	232,248,431	57,804,754	87,147,137	0	42,273,617
Region X	Malaybalay City	244,159,732	65,151,694	6,045,987	19,872,317	0	0
Region X	Oroquieta City	182,203,921	57,229,953	3,159,016	8,196,769	0	0
Region X	Ozamis City	267,947,416	119,320,108	9,744,834	18,749,941	0	0
Region X	Tangub City	138,594,723	62,300,417	11,180,778	8,248,314	0	0
Region X	Valencia City	227,479,516	87,307,117	1,332,074	10,618,763	0	0
Region XI	Regional Total	2,789,007,848	1,229,077,737	162,958,615	138,238,830	0	37,573,734
Region XI	Davao City	1,714,973,535	807,296,343	124,899,560	73,545,086	0	3,666,894
Region XI	Digos City	287,627,256	75,843,512	5,372,244	9,639,266	0	12,731,878
Region XI	Island Garden City of Samal	214,424,160	111,182,332	2,139,029	21,837,014	0	6,124,847
Region XI	Panabo City	241,549,128	120,132,025	12,647,976	14,264,257	0	0
Region XI	Tagum City	330,433,768	114,623,525	17,899,805	18,953,207	0	15,050,115
Region XII	Regional Total	1,594,908,423	719,688,838	92,774,839	113,533,859	806,580	7,345,990
Region XII	Cotabato City	273,311,734	157,457,570	5,496,032	15,328,518	605,462	517,884
Region XII	General Santos City	533,508,781	196,349,250	50,967,531	72,944,715	201,118	6,699,284
Region XII	Kidapawan City	204,532,386	117,173,782	23,298,517	3,269,051	0	0
Region XII	Koronadal City	174,582,549	56,858,295	9,336,122	10,445,016	0	0
Region XII	Marawi City	208,488,762	61,235,805	0	4,774,172	0	0
Region XII	Tacurong City	200,484,211	130,614,136	3,676,637	6,772,387	0	128,822
CAR	Baguio City	510,556,115	239,763,826	53,236,280	52,606,225	0	0
CARAGA	Regional Total	1,211,867,456	363,255,100	23,967,774	109,118,292	2,672,357	12,869,262
CARAGA	Bislig City	231,698,786	109,956,630	5,286,208	14,020,992	0	0
CARAGA	Butuan City	704,934,900	159,993,214	11,755,677	75,133,949	2,672,357	12,869,262
CARAGA	Surigao City	275,233,769	93,305,256	6,925,889	19,963,351	0	0

**STATEMENT OF INCOME AND EXPENDITURES
BY CITIES CY 2004**
(P 0.00)

Region	CITY	EXPENDITURES				Excess (deficit) of Income over Expenditures
		Social Security /Social Services & Welfare	Economic Services	Debt Service	Other Purposes	
Region VII	Regional Total	135,008,532	649,997,762	456,631,232	618,805,739	487,354,244
Region VII	Bais City	3,395,781	31,606,798	0	42,443,757	80,527,453
Region VII	Bayawan City	4,984,496	41,878,503	0	97,640,903	59,292,279
Region VII	Canlaon City	5,765,558	21,348,427	4,032,738	22,123,082	3,886,176
Region VII	Cebu City	29,420,045	228,036,509	384,305,468	86,596,289	-39,640,975
Region VII	Danao City	3,135,772	63,550,962	0	24,513,254	32,923,160
Region VII	Dumaguete City	11,654,406	33,288,604	2,252,487	93,485,174	10,205,581
Region VII	Lapu-Lapu City	7,437,759	37,616,103	7,367,371	19,844,233	83,839,624
Region VII	Mandaue City	3,531,103	56,925,325	32,815,042	4,496,927	162,597,364
Region VII	Tagbilaran City	7,238,123	54,543,406	8,050,120	9,566,241	30,081,244
Region VII	Talisay City (Cebu)	48,752,411	28,942,184	0	80,397,231	3,781,038
Region VII	Tanjay City	4,930,543	19,639,534	17,808,005	61,198,385	11,435,680
Region VII	Toledo City	4,762,536	32,621,407	0	76,500,263	48,425,622
Region VIII	Regional Total	52,118,297	246,545,029	41,299,116	333,691,360	164,015,036
Region VIII	Calbayog City	18,909,370	71,607,585	0	95,743,627	1,621,594
Region VIII	Maasin City	1,643,858	10,408,107	23,504,163	147,560,003	8,745,132
Region VIII	Ormoc City	10,313,335	86,476,623	14,443,143	37,944,713	131,907,311
Region VIII	Tacloban City	21,251,735	78,052,714	3,351,811	52,443,018	21,741,000
Region IX	Regional Total	40,327,466	197,949,642	59,279,241	357,533,613	664,435,167
Region IX	Dapitan City	5,841,267	30,958,432	0	36,778,685	57,511,688
Region IX	Dipolog City	4,481,000	34,222,000	7,556,000	93,663,000	24,690,000
Region IX	Isabela City	776,319	6,355,949	51,723,241	55,751,638	536,629
Region IX	Pagadian City	6,693,880	46,934,260	0	49,202,290	50,184,850
Region IX	Zamboanga City	22,535,000	79,479,000	0	122,138,000	531,512,000
Region X	Regional Total	75,492,643	715,669,170	131,097,185	682,506,649	306,187,388
Region X	Cagayan de Oro City	25,924,512	141,643,165	86,676,711	304,915,777	22,084,909
Region X	Gingoog City	6,093,710	61,722,471	0	18,984,638	87,923,575
Region X	Iligan City	16,085,497	281,028,230	35,235,741	54,527,969	-111,091,366
Region X	Malaybalay City	9,700,869	35,148,159	0	108,240,706	178,931,308
Region X	Oroquieta City	3,792,062	61,807,964	0	48,018,157	1,347,107
Region X	Ozamis City	8,000,395	69,360,628	2,061,733	40,709,777	-6,434,634
Region X	Tangub City	3,743,622	34,768,020	0	18,353,572	18,915,220
Region X	Valencia City	2,151,976	30,190,534	7,123,000	88,756,052	114,511,269
Region XI	Regional Total	42,793,350	516,324,202	92,924,707	569,116,673	597,613,074
Region XI	Davao City	24,289,693	321,708,497	23,663,046	335,904,417	507,357,412
Region XI	Digos City	2,030,995	37,458,329	779,005	143,772,028	-2,929,478
Region XI	Island Garden City of Samal	4,653,254	31,497,878	17,201,960	19,787,845	2,963,363
Region XI	Panabo City	6,229,848	78,690,377	5,450,884	4,133,761	38,576,576
Region XI	Tagum City	5,589,561	46,969,121	45,829,812	65,518,622	51,645,201
Region XII	Regional Total	45,890,064	342,629,113	61,505,740	210,733,401	342,177,514
Region XII	Cotabato City	8,011,775	44,235,046	17,713,200	23,946,247	-2,846,438
Region XII	General Santos City	23,369,509	151,064,742	19,232,717	12,679,914	175,121,679
Region XII	Kidapawan City	4,001,949	17,992,938	13,178,859	25,617,291	76,604,894
Region XII	Koronadal City	4,128,196	20,077,971	0	73,736,949	88,209,805
Region XII	Marawi City	1,565,404	84,744,856	0	56,168,526	5,680,568
Region XII	Tacurong City	4,813,232	24,513,560	11,380,963	18,584,474	-592,994
CAR	Baguio City	19,707,739	88,195,154	0	57,046,890	253,327,976
CARAGA	Regional Total	29,456,120	296,495,534	84,031,784	290,001,233	-221,824
CARAGA	Bislig City	6,586,937	60,629,192	0	35,218,829	28,510,753
CARAGA	Butuan City	18,122,695	197,196,879	78,152,943	149,037,924	-39,700,035
CARAGA	Surigao City	4,746,488	38,669,463	5,878,841	105,744,480	10,967,458

**STATEMENT OF INCOME AND EXPENDITURES
BY MUNICIPALITIES**

(SEE SEPARATE PDF FILE)